



**AGENDA**  
**PARK ADVISORY COMMITTEE**  
**SPECIAL MEETING AT 7:00 PM**

Thursday, November 1, 2018

The Park Advisory Committee (PAC) acts in an advisory capacity to the Granada Community Services District Board of Directors in matters regarding parks and recreation. The Committee does not have any decision-making authority.

**CALL SPECIAL MEETING TO ORDER AT 7:00 P.M.:** District Office Meeting Room, 504 Avenue Alhambra, 3<sup>rd</sup> Floor, El Granada.

**ROLL CALL**      Members:      Pat Tierney (Chair), Nancy Marsh (Vice Chair),  
Susannah Cantrell, Michelle Dragony, Paul Koelsch,  
Owen Moore, and Fran Pollard.

Staff:              Delia Comito

**GENERAL PUBLIC PARTICIPATION**

Communications from the public, committee members, and staff concerning park related matters which are not on the agenda. Speakers are limited to 3 minutes each.

**ACTION ITEMS**

- |   | <b><u>ESTIMATED TIME</u></b> |
|---|------------------------------|
| 1. Approve October 2, 2018 Meeting Minutes.   | (5 minutes)                  |
| 2. Discuss October 20, 2018 Meeting/Event for a Small Neighborhood Park at Avenue Balboa Medians: | (60 minutes)                 |
| a). Analyze Community Input Received.   |                              |
| b). Discuss Concept Design Changes/Modifications.   |                              |
| c). Discuss PAC Recommendation to the Board and Preparation for the 11/15/18 Board Meeting.       |                              |
| d). Future Public Outreach Planning.  |                              |
| 3. Discuss Picnic Table Replacements in Avenue Balboa Medians.                                    | (20 minutes)                 |
| 4. Discuss 2019 Connection to Recreation Events/Program.  | (15 minutes)                 |
| 5. Schedule/Confirm the Next PAC Meeting(s).  | (5 minutes)                  |

**ADJOURN**

**APPROX. 8:45 PM**

This meeting is accessible to persons with disabilities. Notification in advance of the meeting will enable the District to make reasonable arrangements to ensure accessibility.

Staff reports and other materials are available to the public and will be made available in appropriate alternative formats to persons with a disability. Please contact Delia Comito at (650) 726-7093 to request copies of documents or materials related to this meeting or to request a disability-related modification or accommodation.



**ITEM #1**



# GRANADA COMMUNITY SERVICES DISTRICT



## **Minutes** **PARK ADVISORY COMMITTEE** **SPECIAL MEETING**

Tuesday, October 2, 2018

### **CALL TO ORDER**

The Special meeting of the Park Advisory Committee was called to order at 7:03 pm.

### **ROLL CALL**

Committee Members: Pat Tierney (Chair), Nancy Marsh (Vice Chair), Paul Koelsch, Owen Moore, and Fran Pollard. Susannah Cantrell was absent. (Plus One Vacancy)

Staff: Delia Comito

### **GENERAL PUBLIC PARTICIPATION**

Resident Debra Gerardi addressed the Committee and distributed a written report titled, *Defining the Sustainable Park: A Fifth Model for Urban Parks*.

### **ACTION ITEMS**

#### **1. Approve September 11, 2018 Meeting Minutes.**

**ACTION:** Pollard moved to approve the September 11, 2018 minutes. (Pollard/Moore). Approved 5-0.

#### **2. Discuss Planning for Public Outreach Event on 10/20/18 for presentation of the Median 7 and 8, Avenue Balboa, Preliminary Concept Designs for a Small Neighborhood Park.**

Chair Tierney explained the item is to plan for the special meeting/event with the GCSD Board, to be held on Saturday, October 20, 2018 on the Avenue Balboa median to present the concept designs to the public. The Committee held a discussion regarding the items needed for the event and who will provide them.

Tierney then reviewed a handout he prepared, which outlines the history of PAC's work on the medians, specifically Avenue Balboa. He also reviewed the timeline through June 2019, when he hopes to see construction start on the median improvements. He suggested having three public outreach meetings in between.

The Committee also talked about including bench and/or picnic table options to replace the existing broken ones.

#### **3. Discuss and Finalize the Parks and Recreation Portion of Next Quarterly Granada Community Services District Newsletter.**

Committee Member Marsh provided the updated newsletter which includes information on the event and an added piece to recognize resigning Member Dale Ross. The newsletter will be forwarded to the General Manager for the final touches and publication. Copies will be made to be placed at the post office.

**4. Discuss the 2019 Special Events Program/Recreation Programs.**

Tierney reviewed the list of programs he provided. The intent is to use the standards that other agencies with recreation programs follow, including the use of contractors to conduct the programs, with the District promoting them.

Members were assigned to obtain information on specific programs, and the Committee agreed to have the programs identified by January 1<sup>st</sup>.

**5. Schedule/Confirm the Next PAC Meeting.**

The Committee scheduled the next meeting for 11/01/18 to review the results from the 10/20 event. A second meeting is scheduled on 12/06/18, and the next public outreach event is scheduled on 01/26/19 from 9:00 a.m. to noon.

**ADJOURN**

The meeting was adjourned at 8:51 p.m.

SUBMITTED BY:

APPROVED BY:

\_\_\_\_\_  
Delia Comito, District Secretary

\_\_\_\_\_  
Pat Tierney, Committee Chair

Date Approved by the Committee: November 1, 2018

**ITEM #2**





**GRANADA COMMUNITY SERVICES DISTRICT  
PARK ADVISORY COMMITTEE**

## AGENDA MEMO

To: Members of the Committee

From: Chair Tierney

Re: Discuss 10/20/18 Event

Date: November 1, 2018

Attached is a report prepared by Member Nancy Marsh, containing information on the Oct. 20 public event held on Avenue Balboa, which includes the written and emailed comments received about the play area proposals. I have reviewed the information and confirm its accuracy. I plan to bring a LCD projector with my laptop to review the report in a slide show at the meeting.

The Committee needs to discuss what changes should be made based on the public comments received.

Moving forward, the following is a tentative schedule:

- Nov. 1 PAC meeting to discuss Oct. 20 Balboa play area public meeting #1 results. Decide to continue or stop further planning for a Balboa play area. If we vote to continue, make recommendation on elements to include and play area designs. Forward recommended design changes to architect (with Board approval).
- Dec. 6 PAC meeting to review revised play area designs from architect. Make recommendations to Board.
- Jan. 8 PAC meeting for play area recommendations and planning of meeting #2.
- Jan. 26 Public meeting #2 on recommended play area designs, 10am-Noon.
- Feb. 25 PAC meeting to review public meeting #2 results and make any recommended changes. Preparation for meeting #3.
- Mar. 23 Public meeting #3 on revised play area designs, 10am-Noon
- Apr. 4 PAC meeting to make any revisions and recommend designs to Board.

# Balboa Medians Play Area Public Outreach

## Parks Advisory Committee Review Packet

For

## Comments Received for October 20, 2018 Event

<b>Contents</b>	<b>Page</b>
Overview	1
Balboa Median Flyer	2
Blank Comment Form	3
Comment Evaluation Logic	4
Verbatim Comments and Scoring	5
Chart: Play Area Element Scores	13
Map of Positive/Negative Comments Received	14
Concept A, B and C Drawings	15

## **Balboa Medians Play Area Public Outreach Overview**

The Parks Advisory Committee of GCSO organized a public outreach event to solicit input and review ideas/concepts for play areas on the El Granada medians located at the Avenue Balboa Circle and the adjacent median on Avenue Balboa between Columbus and Francisco Streets.

### **Publicizing the event:**

The event, to be held on the Avenue Balboa Median on October 20, from 9:00am to Noon on the Avenue Balboa median between Columbus and Francisco Streets, was announced on October 3 via posted flyers at the El Granada Post Office, Hardware Store & Café, Beverage Store, Spanglers, The Press, on ten posts and trees on the impacted medians and on the social media site NextDoor, in El Granada and Miramar. In addition, on October 15 (check this date) three PAC members went door to door to distribute flyers at each residence on Avenue Balboa from Avenue Alhambra to the Balboa Circle, and to several houses on either side of Balboa on Columbus and Francisco Streets. The NextDoor notification was refreshed every few days between October 3 and 20.

The event was also publicized on the [www.granada.ca.gov](http://www.granada.ca.gov) Parks and Recreation web page and in the Parks e-newsletter which was distributed on October 17.

Residents were invited to attend the public event to view concept drawings and submit comments on potential play areas as well as picnic table/bench styles. Residents were also invited to submit comments at [info@granada.ca.gov](mailto:info@granada.ca.gov) if they could not attend.

### **Event:**

PAC members set up shade tents on the Avenue Balboa/Francisco median, and displayed placards with information on the basis for proposing a play area on the Balboa medians, safety and sustainability, a topographical/constraints map. Three concept drawing (labelled A, B and C) and photographs of natural play structures and picnic tables and benches made of various materials.

Attendees were given a brief on what PAC was asking for and were given a clipboard and comment form to record their views. Everyone who approach was encouraged to submit a written comment form.

### **Comments Received/Evaluated**

Sixty-one comment forms were collected during the event. About 16 forms were taken away by attendees, to be mailed or submitted to the GCSO office later. As of October 27, only one additional form has been received. Ten additional comments were received via the NextDoor social media website. A total of 72 comments have been recorded verbatim on a spreadsheet and scored for positive/negative sentiment about adding a play area to medians, as well as positive/negative views on various amenities.

As per direction from the GCSO Board, evaluation of public responses should be particularly sensitive to the views of residents who live adjacent or very close to the medians for which play areas have been proposed. These residences are noted as "close" on the comments spreadsheet and the residence for positive/negative sentiment for each comment received has been indicated on a map of El Granada.

This packet has been prepared for review by the Parks Advisory Committee at their November 1, 2018 public meeting.

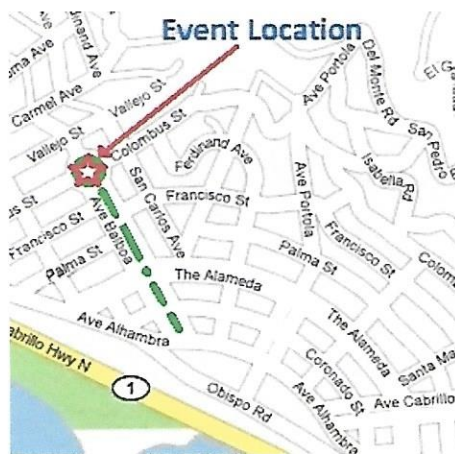


# Looking For Your Input

## Special Public Meeting

### Planning A Play Area

On Balboa Avenue Median near Francisco and Columbus Streets, El Granada



What Play Area Elements and Locations Would You Like?

*See Drawings, Preliminary Concepts and Safety Features*

What: 1) Special meeting to solicit your ideas  
2) GCSD volunteers taking your feedback

When: Saturday, October 20, 2018, 9:00am-Noon

Where: Balboa Avenue median at Francisco St.

By: Granada Community Services District  
If you can't attend send your comments to: [info@Granada.ca.gov](mailto:info@Granada.ca.gov)







## Balboa Medians Play Area Comments Review

### Comment Evaluation Logic:

#### Enthusiastic About Park Score:

Y = clearly positive remarks, e.g. "I like the play area in concept C" or cites preference for specific play structures

M = neither clearly positive nor negative remarks, but equivocal or amenable to further consideration of a play area (e.g. "concept C at most")

N = clearly negative remarks (e.g. "don't do anything" or "leave as is")

#### Non-Concept-Specific Comments:

If no specific concept is mentioned, mark "Y" for any amenities specifically included and "N" for any amenities specifically excluded.

#### Concept-Specific Comments:

If comments cites a specific concept (A, B or C) – mark "Y" for all amenities in that concept unless specifically excluded (e.g. "I like concept B but not the basketball court").

#### "No Change" or "Leave as is" Comments:

Mark "Y" for existing elements (trail, picnic table) and "N" for proposed additions (stage, basketball, playground, bathroom)

#### Trees:

Mark "leave" if comment specifies leaving trees alone or "don't remove"; mark "concern" if any concerns are expressed, or if the comment suggests removal and/or replacement of existing trees

#### "Close" Location Definition:

Any home adjacent to Balboa Circle and/or the Balboa/Francisco median and any home within three houses of these medians on Ave Balboa or on east/west cross streets. This includes:

- Ave Balboa from Vallejo north of Balboa Circle to Palma (west side of street) or 3 houses south of Francisco (east side of street) south of the Balboa/Francisco median
- Columbus St – 3 houses west and east of Balboa Circle, including houses at intersection of Columbus and San Carlos to the east, which have a San Carlos address
- Francisco St – 3 houses west or east of the Balboa/Francisco median

Comm ent #	Close by	Street	Adults	Kids	Comment	Enthusiastic about park		Trees concern	Natural Landscape	Trails	Native Plants	Benches	Picnic Tables	Stage	Basket ball	Playground	Bathroom	Other/want	Kids ages		
						Y	N														
1	X	Ave Balboa	1	0	<p>Thank you for the opportunity to inform the planning process for improvements of the Avenue Balboa medians. As a resident of Ave Balboa, this project has a significant impact on me and impacts greatly what makes El Granada a wonderful place to live. My recommendation is that the development of the medians be aligned with sustainable practices that prioritize the health of both the residents and the environment. To that end, I am opposed to any hardscape installations such as basketball courts and skate parks and requisite fencing. These are more appropriate for school yards or other built environments. Additionally, I would not support installation of bathrooms or other structures requiring daily maintenance or other structures that can become a health hazard or attractive nuisance. I am very supportive of improvements that incorporate sustainable practices for maintaining water catchment during the rainy season including retention of trees and planting of native plants and use of permeable surfaces for pathways and play areas. I am in support of natural play areas and structures for kids that reinforce active imagination, physical development and that align with the aesthetics of the natural environment and do not replicate urban recreational areas. I support replacement of picnic tables, benches and garden areas that support ecological education as well as sustainable support of pollinators and native plants along with other environmentally beneficial designs. I would also recommend that prior to initiation of these improvements, the Board develop and share with the public, a strategic plan that addresses: overall costs for design and implementation; budget considerations for both creation and ongoing maintenance of the medians and build areas; the plan for ongoing maintenance of structures, gardens and signage; public safety considerations and liability coverage (is this picked up by the county?), and evaluation of the environmental impact of any proposed developments or improvements.</p> <p>Thank you for your hard work in developing enjoyable spaces and play areas that meet the needs of the community and that preserve the environment, natural benefits and enjoyable aspects of this area. My hope is that these efforts will enhance the healthy, peaceful and sustainable coastal neighborhoods. <b>Adjacent - east side of median 7</b></p>	X		X													
2	X	Ave Balboa	2	0	<p>Of the different plans, I prefer plan B. It will provide older kids with something to do. <b>Adjacent - SW end median 7 - same house as comment 8</b></p>	X				X								Concept B			
3	X	Ave Balboa	3	3	<p>We live on Balboa Circle. Thanks for the hard work putting the drawings together and bringing the community together for the discussion. I'd like to see a stronger tree maintenance agenda in any plan moving forward. We had the largest tree in the circle land in between us and our neighbor in 2001 which was very scary! We liked the "concept C" minimalist playground plan and natural and rustic structures to blend in with the environment. I definitely would not want a bathroom or larger improvements like basketball courts. We are open to more, low impact development such as fitness trail exercise stations, horseshoe pits, picnic areas, etc. But unless we address the trees (long term plan to remove replace over time) and use trees more appropriate for the area, my concern is that these new amenities will not get used because of the constant debris falling off the trees. These are very messy trees to be under. If we can pair a very subtle development plan as noted in Concept C with a plan to start thinning the trees I think that would be a winner. We need to let more light into the medians before people will spend their time under the trees, beyond just walking through. I love walking through the medians but I don't tend to hang out in them because it is just too dark and heavy of a tree canopy. Thanks again for your efforts here in improving our community. It is much appreciated! <b>Adjacent SE Median 8 - same house as comment 6</b></p>	X															



Comm ent #	Close by	Street	Adults	Kids	Comment	Enthusiastic about park		Trees	Natural Landscape	Trails		Native Plants	Benches	Picnic Tables		Stage	Basket ball		Playground	Bathroom	Other/Wait	Kids ages				
						Y	M			N	Y			N	Y		N	Y					N	Y	N	Y
4	X	Ave Balboa	3	3	<p>I would like to see some purpose developed for the medians - a play area for kids would be great. Want a natural, rustic look that blends in with existing environment. Nothing too manufactured or too colorful. Concept C would be the best option - and away (some) from Balboa Circle where traffic is a little heavier and moves faster. Median has calmer traffic. The sample pictures (Australia) is a good model for such structure. Would like to see perhaps exercise stations or horseshoe pits. I would not want to see a bathroom or paved surfaces. I don't believe a stage would be valuable. We have lived on Balboa Circle for 17 years and are raising our 4 kids here. We can provide good testimony for the trees, the traffic, the dog walkers and families with kids. The ad hoc tire swing that appears in the Balboa median is used all the time! It is the only thing my kids can walk to on their own. Our other alternatives are too far away for the kids without a car ride, or a planned bike ride with parents (Quarry Park, El Granada School, Clipper Ridge Park). I do have big concerns about the state of the existing eucalyptus trees. In 2001, a large tree fell on our house and we've watched a number of trees and branches fall over the years. There is not a body that exists to maintain these trees. Would love to see a replacement strategy in place. <b>Adjacent SE Median 8 - same house as comment 5</b></p>	X																				
					<p>I would like to see nothing done! We live yards away from proposed site. Our bedroom and living area is on the street - Ave Balboa. We are in our 60s, have raised our kids here and worked our butts off being involved in the community and schools for years. Now we are still working with no end in sight. All we want is peace and quiet, and sleep. For years we have put up with teens at night, partying loudly across the street from us - with no ability to sleep. If you have more things to draw older kids - the late night noise will worsen. I don't want to have to call the cops because I'm a nice person and don't want to get kids in trouble.</p> <p>Where will people park? Will you have lights on at night - don't want light shining into my house. Enforce hours? How do you shut it down at night? Increased traffic issues Safety - people speed around the Balboa circle and also coming around the corner from Columbus on to Balboa. I have almost been hit several times just trying to back out of my driveway. Barking dogs - one of neighbor's dogs (corner Francisco &amp; Balboa) are terrible outside barkers and they "flip out" every time someone walks by or is on the median. They bark at people and other dogs. We seriously cannot handle any more of their barking. It's a matter of self preservation to our mental health. Increased noise: I work part of my job at home. Don't want to listen to screaming kids, parties, etc. all day. Nor do we want constant noise on the weekend. Imagine being sick and you can't sleep or take a nap because kids are screaming on the tire swing across from you. Also - no one ever surveyed me. Candidates today (and others who are involved) said that someone named "Daler" did a door to door survey of the affected neighbours a couple of years ago. No one came here to my house. What about using this \$\$ for continued Quarry Park development? <b>Adjacent - SW median 8 and west side of median 7</b></p>																					
5	X	Ave Balboa	2	0	<p>Safety is my main concern. Speeding on streets, going against one way. Need speed bumps. Concerned about parking. History suggests people will drive from other areas even though there is no parking. The idea is good in principle but I have many more concerns before I can back this. <b>Adjacent, SW end Median 7 - same house as comment 4</b></p>																					
6	X	Ave Balboa	2	0	<p>Natural, rustic benches &amp; tables would be great. No playground - too disruptive. <b>Adjacent NW median 8</b></p>																					
7	X	Ave Balboa	2	2																						











Comm ent #	Close by	Street	Adults	Kids	Comment	Enthusiastic about park		Trees		Natural Landscape	Trails		Native Plants	Benches	Picnic Tables	Stage	Basket ball	Playground	Bathroom	Other/walk	Kids ages			
						Y	M	N	leave		concern	Y										N	Y	N
					Running paths; low lighting at night perhaps? Dispensers for dog poop bags & bins. I love the idea of having native plant gardens. I think another play area in addition to that at quarry park is a great idea. So - play area, nature gardens, running path - those three can absolutely exist together. Picnic tables & benches where there is a good view.	X																		
34		Francisco	2		Being the GSD now has "parks" included I strongly feel that they should start spending some money on park & rec. To just spend money on buying vacant lots and then not making improvements for parks has to stop. Our community needs more than just open unusable lots.	X																		
35		Francisco	2		I would like to see a park on Balboa Medians. I don't have young children but would like to see a safe area for our local children to play. Benches would be nice with a couple of climbing frames. However, I think some trees might need cutting down for safety. <u>Close, not adjacent</u>	X																		
36	X	Francisco	2		No plastic structures. Use galvanized metal when possible. Spinning structures great. Keep dirt & grass, add organic mulch when needed. More green; no concrete and asphalt. Keep open as much as possible, no fencing or very low and transparent if truly needed. Plan to not need, please. Repair existing picnic tables w/bench. They are historic. Talk with Steve Kikuchi about great metal play structures by Kompan - examples at Roosevelt Park in Philly - I have photos & videos.	X																		
37		Madrid Ave	1		Overall I believe concept A provides the best, yet modest, recreational needs - <i>in the long term</i> . But it would need to be phased-in. 1st phase: replace benches & picnic tables on median 7. 2nd phase: Add 5-12 year olds play structures - of nature play design - but be sure to accompany the play area with a design-specific maintenance plan & <u>fundings!</u> 3rd phase: Implement teen/family activities on median 8. 1/2 court designed for ALL - 1) basketball 2) badminton 3) pickleball. We costed it - could be done for \$50-70k. About the trees: Almost all these Eucs were planted between 1906 & 1917 - so their ages are now ALL in the range of 101-112 years old. Euc lifetime can extend to <u>150 years</u> , max. Accordingly, GCD can/should develop a <u>systematic ordering</u> . Euc removal for the next 35 years to 49 years period. Scientific studies, publications by forestry specialists have developed criteria for identifying weaknesses in any give Euc here. These include <u>principal defects/weaknesses/life time hindering/limiting</u> factors of: A) a Euc tree that is <u>standing alone</u> , or nearly so B) A Euc tree that is <u>located on the edge</u> of a grove C) A Euc tree that has a <u>dead/dying top</u> , with no foliage at top 10-20 feet D) A Euc tree that has <u>multi-trunks</u> or splits E) A Euc tree that has <u>large wounds</u> from past large-limb removals - which invite rot Use these criteria to rank/categorize all GCD median Eucs - and when to remove each Euc - spreading remove over their remaining 38-49 years of life. Start now! Budget it!	X																		
38		Palma	2		Concept A: looks like a great option, however, don't love the 6' wall around basketball court. Also don't really want a bathroom (smell). Concept B: Roundabout looks nice (again no bathroom) but don't care for the basketball court. Least favorite concept. Concept C: nice & natural. Playground could be bigger. Overall I like A the best - the paths look natural, the playground size looks okay (could be larger), however, I don't want to see trees taken down unless they are considered a safety issue/diseased. They are what make this neighborhood beautiful. We are VERY excited to have a park & can't wait to spend time there.	X																		
39		Palma	2	1	I'm okay with Concept A or C. Concept B - I am worried about noise from the basketball court. Also I am not fond of the fencing. Any other exercise areas would be okay, as long as they don't cause noise (running trail with exercise benches, etc.).	X																		
40	X	Palma	2	0	Also small kids noise is okay. <u>Close, not adjacent</u>	X																		



Comm ent #	Close by	Street	Adults	Kids	Comment	Enthusiastic about park		Trees		Natural Landscape	Trails	Native Plants	Benches	Picnic Tables	Stage	Basket ball	Playground	Bathroom	Other want	Kids ages	
						Y	M	N	leave concern												Y
41		Palma	2		Would like to see: swings, see-saw, spinning/climbing structure, built in steps-slide, picnic tables/benches, paths for bikes/scooters. All materials to be natural or wood composite to last. Natural fencing. Safe crossings. I would not like to see: plastic structures, bathrooms, basketball court. We need a safe place for our neighbors to connect and build a stronger community.	X					X		X							4	
42		Palma	2	1	Would like to see: play areas for toddlers and kids 5-12 as well. Soft surfaces for them to land on. Big slides & swings. Fences are obviously super important. Places to sit for adults.	X							X							2	
43		San Carlos	2	2	Would like to see nature playground, climbing frame w/lots of logs & stepping stones.	X				X										7,9	
44		San Carlos	2		Toddler playground especially. No basketball court	X															
45		San Carlos	2	0	1. Preserving & restoring (maybe add a plaque) the railroad tables is critical. Big historical tie - let's embrace it! 2. Save the tree-swings! People love 'em! Yeah - some maintenance needed - embrace them! 3. Need plan to replace dying trees	X					X										
46		San Juan	2	0	Mitigation of eucalyptus - they are a high fire danger. Prefer natural playgrounds & site concept C; B as second choice	X					X										
47		San Juan	1	0	Would like to see: Simple grave/aggregate path in light color, such as gold (orange) fines for visibility at night. Simple play structures & railroad ties in pyramid. Restore picnic tables to orig design (RR ties & lumber). Tetherball okay. Keep picnic supports - ocean shore RR ties/walks. Subtle low lighting over picnic tables - discourage night time drinking & trash. Would not like to see: BBQ, sport court eg basketball, volleyball.	X					X										
48		Sonora	2	2	A small, natural place where kids can meet and neighbors mingle. Maybe a small tire swing, slide or something spinning! Nothing over the top because nature should be first & foremost. It's the draw of this neighborhood.	X				X										1,4	
49		Sonora	2	0	Restoration/replacement of current tables/benches, in unobstructive wood. A few trash cans, regular cleaning & garbage pickup. NO additional play structures! The "wild" natural medians are part of what makes El Granada special. As a homeowner living by a median (not Balboa) I would hate for "my" median to be "developed". I do love seeing the wildlife and the natural setting.	X															
50		The Alameda	2	2	I would like to see a combination of A & C, minus the basketball court - seems out of character for the coast neighborhood. Lots of support for nature-based playgrounds & rustic touches. Traffic calming & signs super necessary - thank you guys much!	X					X									4,7	
51		The Alameda	4	0	1. Take down as many eucys as possible. 2. Re-use railroad tracks for benches. 3. Prioritize activities for kids and nice dog walk trails. 4. A or B concept 5. Bring in more sun!	X					X										
52		The Alameda	2		Concept C: Fine except too minimal. This seems a lot of effort for very small gain. Better than nothing. Concept B: I like the play area, stage and picnic areas. I wonder if a full court basketball court would be used. Concept A: I like the playground areas, benches, picnic areas. Another idea: keep all picnic, playgrounds, stages on one strip. Make the other strip a native garden; say, put a serendipitous path to allow walking thru; remove all eucalyptus trees, replace with California plants.	X						X									
53		Vallejo	2	0	Not opposed to playground, just not sure how that would be maintained with all the trees. We have only 1 tree and the amount of leaves, branches, ash, seeds & oils is enormous on a windy day. Would love to see an area planted with native, pollinator plants. Seating would be nice but in the past it seemed people would hang out & leave their trash. Seems the neighbors would need to help monitor. Same house as comment 58	X						X									
54		Vallejo	3		Just a small, clean, eco-friendly rustic play area that will serve mostly locals who live in the area.	X															

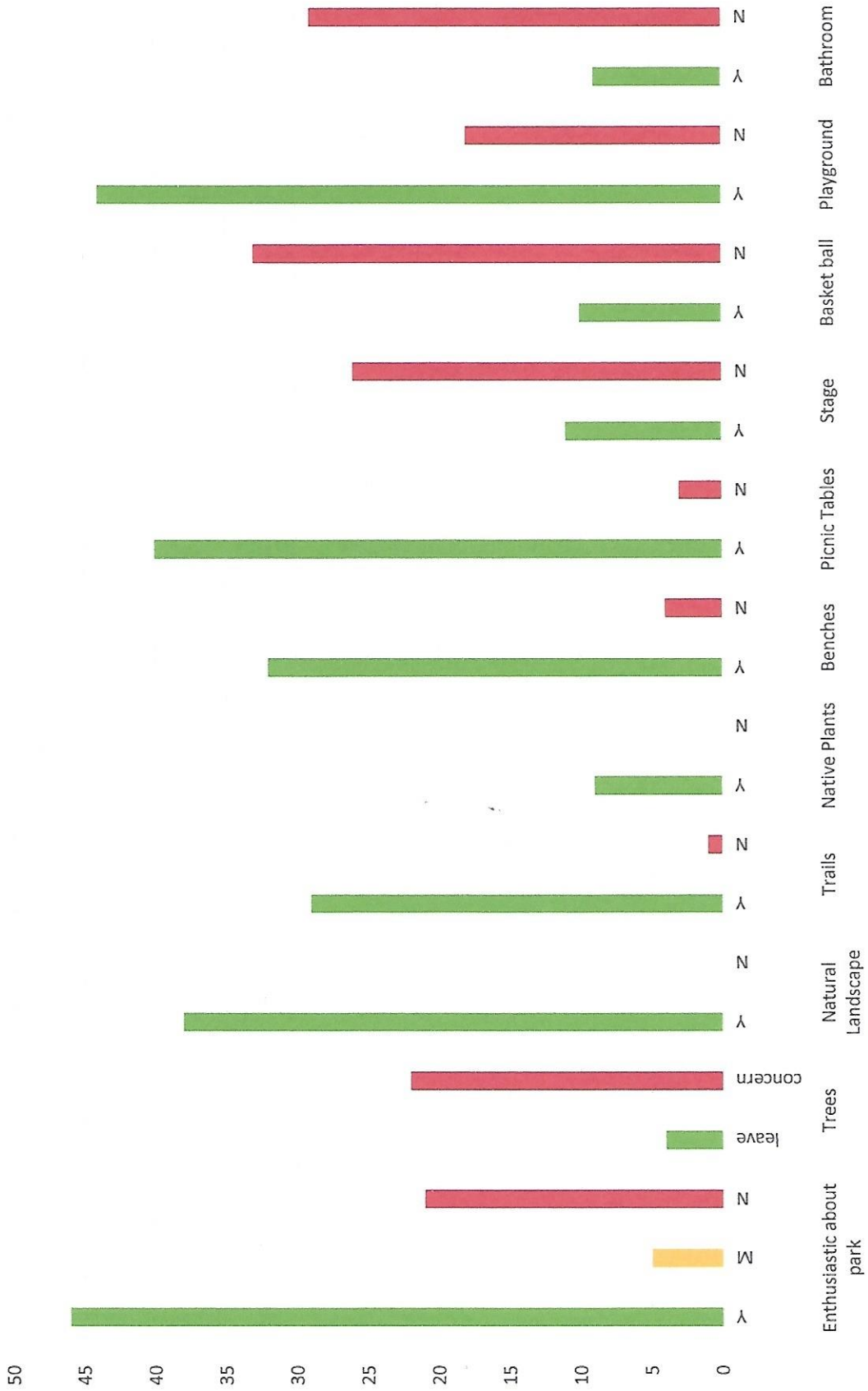


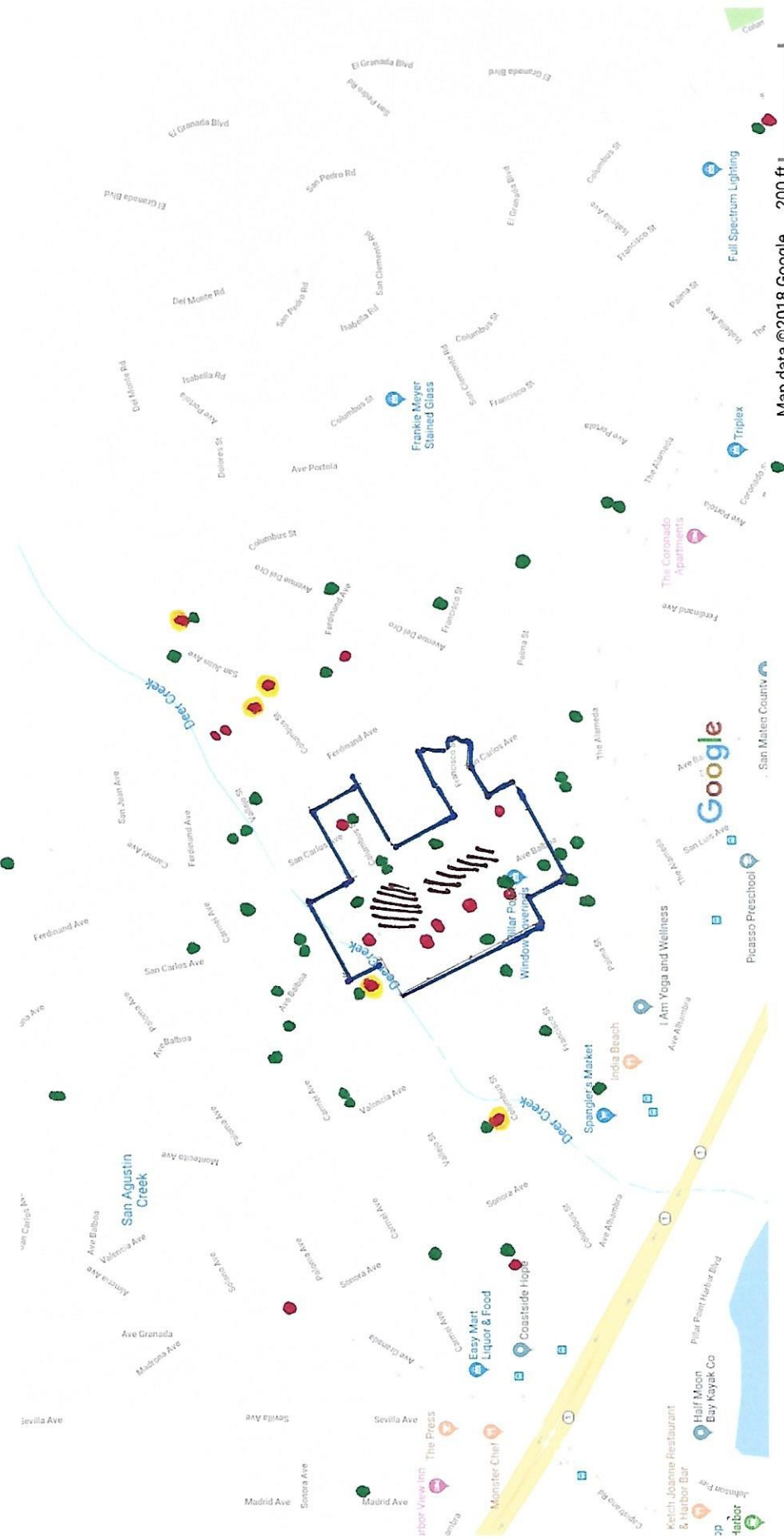






### Balboa Median Park Area Public Outreach - Element Scores





Map data ©2018 Google

200 ft

/// medians

— close & adjacent homes



1 2 3 4 5 6 7 8 9 10 11 12

13 14 15 16 17 18 19 20

RESTROOM PRE-FABRICATED IN TOILET & SINK  
 PAVING AREA  
 STAGE  
 RETAINING WALL CONCRETE WITH  
 GRASS PLANTINGS BEHIND 1/2 WALL  
 BENCH (TYPICAL)  
 GRAVEL PATH ACCESSIBLE  
 BENCH (TYPICAL)

ESCALATORS TREE REMAINED (TYPICAL)  
 CONCRETE SEAT WALL (TYPICAL)  
 CONTAINMENT FENCING 4" TALL OPEN

PLAYGROUND 8-12 YEAR OLD  
 WITH PLAY STRUCTURE TOWERS  
 CLIMBER RIGS JACKING ETC.  
 NEW LINED CURB & PAINTED CROSS WALK

FOODLER PLAYGROUND

PLANTING TABLES & BENCHES  
 FOR VISITORS CLEAN

EXISTING ESCALATORS TREE TO  
 REMAIN (TYPICAL)



NOTE:  
 • ALL PATHS ARE ACCESSIBLE UNLESS NOTED OTHERWISE  
 • ALL PLAY EQUIPMENT SHALL MEET NATIONAL ACCESSIBILITY  
 • ALL SOFT PLANTINGS SHALL BE NATIVE OR NON-INVASIVE  
 DROUGHT TOLERANT FOR MAINTENANCE

PLANTING FOR WALKWAY USE BENCHES  
 FOR MAINTENANCE (TYPICAL) AND TREES  
 ESCALATORS TREE TO REMAIN (TYPICAL)

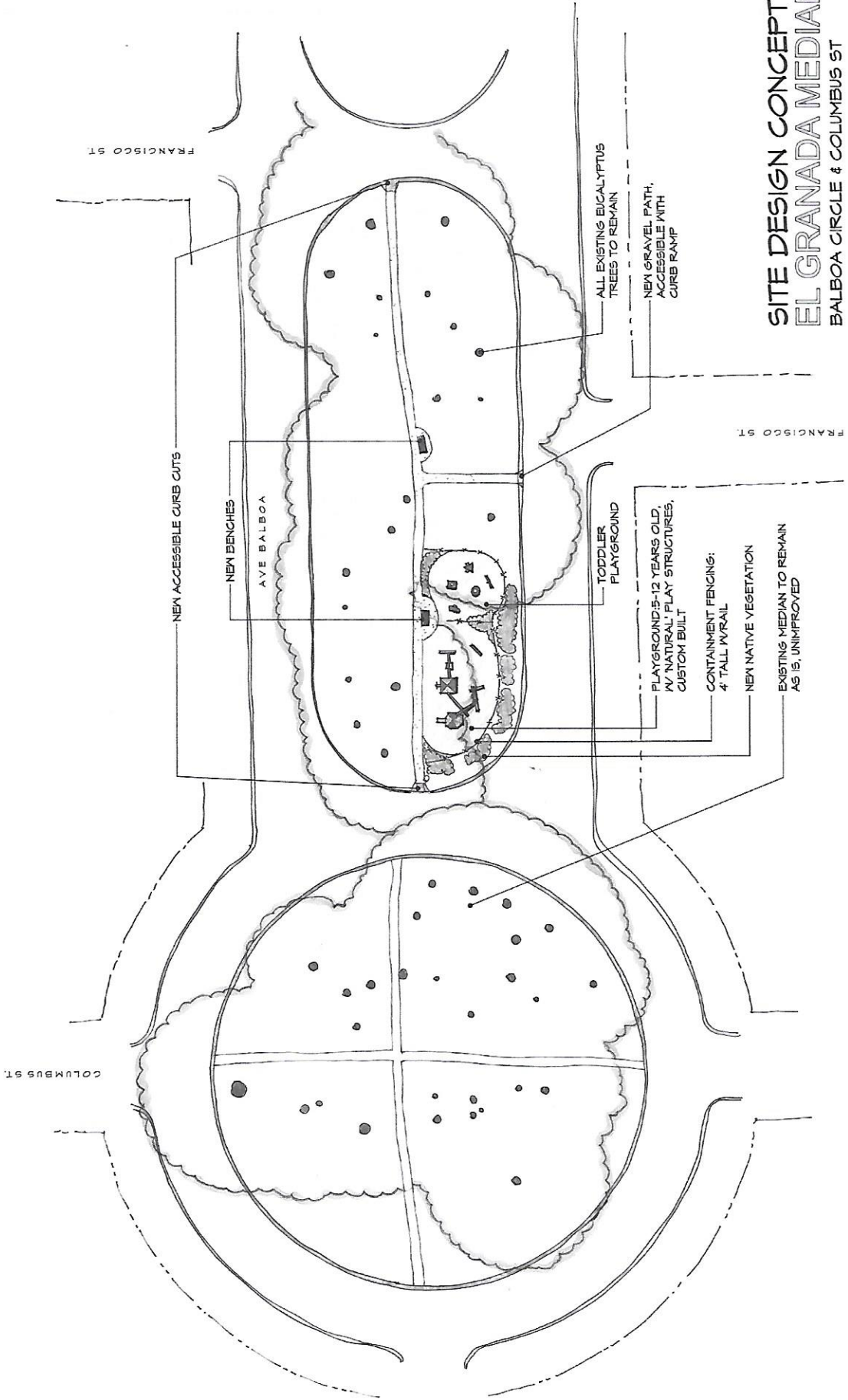
RETAINING WALL 48" TALL CONTAINMENT FENCING  
 PAVING TREE ROOTS  
 BENCH (TYPICAL) 48" X 48"

**SITE DESIGN CONCEPT A**  
**EL GRANADA MEDIANS**  
 BALBOA CIRCLE & COLUMBUS ST

DATE 09/20/18  
  
 Kinichi + Kenkel Design Group  
 1000 N. GARDEN ST. SUITE 100  
 DENVER, CO 80202  
 TEL: 303.733.1111  
 WWW.KINICHIKENKEL.COM  
 SCALE 1/4" = 1'-0"







FRANCISCO ST

FRANCISCO ST

COLUMBUS ST

NEW ACCESSIBLE CURB CUTS

NEW BENCHES

AVE BALBOA

TODDLER PLAYGROUND

PLAYGROUND 5-12 YEARS OLD, W/ NATURAL PLAY STRUCTURES, CUSTOM BUILT

CONTAINMENT FENCING: 4' TALL IVY RAIL

NEW NATIVE VEGETATION

EXISTING MEDIAN TO REMAIN AS IS, UNIMPROVED

ALL EXISTING EUCALYPTUS TREES TO REMAIN

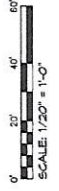
NEW GRAVEL PATH, ACCESSIBLE WITH CURB RAMP

**SITE DESIGN CONCEPT C**  
**EL GRANADA MEDIANS 7 & 8**  
 BALBOA CIRCLE & COLUMBUS ST

DATE: 10/16/19



**Kikuchi + Koniet Design Group**  
 Landscape Architecture  
 10000 Wilshire Blvd, Suite 1000  
 Los Angeles, CA 90024  
 (310) 778-1713 | Fax (310) 778-2071  
 www.kkdesigngroup.com





**ITEM #3**



GRANADA COMMUNITY SERVICES DISTRICT  
**PARKS ADVISORY COMMITTEE**

---

---

**AGENDA NOTICE**

---

---

There are no documents for this Agenda Item.





**ITEM #4**



**GRANADA COMMUNITY SERVICES DISTRICT  
PARK ADVISORY COMMITTEE**

---

## **AGENDA MEMO**

---

To: Members of the Committee

From: Delia Comito

Re: 2019 Connection to Recreation Events/Program

Date: November 1, 2018

---

At the last PAC meeting, the Committee agreed to identify, by the first of January, which recreation programs could feasibly be offered next year. Chair Tierney provided a list of the following suggested programs:

**Youth Programs**

Challenger British Soccer  
Make Me a Pro Sports  
World Cup Soccer  
Making Movies/Video Camp  
Cetaceans, Seals and Science  
Learn to Sail  
Special Needs Coastal Ride

**Family Programs**

Movies in the Park  
Concert in the Park  
Dog Training  
Guided Hikes in Rancho Coral del  
Tierra

**Adult Programs**

Ballroom Dancing  
Coastal Edibles  
History Walk  
Pickle Ball  
Jewelry Making

**Senior Programs**

Zumba  
Bingo

The list below shows the program assignments by Committee Member. With the resignation of Member Moore, another member may want to pick up his program assignments.

Owen Moore – Surfing (Tim West), Cooking Class  
Paul Koelsch – Soccer, Kids Camp  
Nancy Moore – Movies in Quarry Park  
Pat Tierney - GGRNA



**ITEM #5**



NOVEMBER 2018						
Sun	Mon	Tue	Wed	Thu	Fri	Sat
				★ 1	2	3
4	5	6	7	8	9	10
11	HOLIDAY 12	13	14	GCSD 15	16	17
18	19	20	21	HOLIDAY 22	23	24
25	26	27	28	29	30	

FEBRUARY 2019						
Sun	Mon	Tue	Wed	Thu	Fri	Sat
					1	2
3	4	5	6	7	8	9
10	11	12	13	14	15	16
17	18	19	20	GCSD 21	22	23
24	PAC 25	26	27	28		

DECEMBER 2018						
Sun	Mon	Tue	Wed	Thu	Fri	Sat
						1
2	3	4	5	PAC 6	7	8
9	10	11	12	13	14	15
16	17	18	19	GCSD 20	21	22
23	24	HOLIDAY 25	26	27	28	29
30	31					

MARCH 2019						
Sun	Mon	Tue	Wed	Thu	Fri	Sat
					1	2
3	4	5	6	7	8	9
10	11	12	13	14	15	16
17	18	19	20	GCSD 21	22	Public Meeting 23
24	25	26	27	28	29	30
31						

JANUARY 2019						
Sun	Mon	Tue	Wed	Thu	Fri	Sat
		1	2	3	4	5
6	7	PAC 8	9	10	11	12
13	14	15	16	GCSD 17	18	19
20	21	22	23	24	25	Public Meeting 26
27	28	29	30	31		

APRIL 2019						
Sun	Mon	Tue	Wed	Thu	Fri	Sat
	1	2	3	PAC 4	5	6
7	8	9	10	11	12	13
14	15	16	17	GCSD 18	19	20
21	22	23	24	25	26	27
28	29	30				