



GRANADA COMMUNITY SERVICES DISTRICT

AGENDA **PARKS ADVISORY COMMITTEE** **SPECIAL MEETING**

Monday, August 29, 2022 at 7:00 p.m.

The Parks Advisory Committee (PAC) serves the GCSD Board of Directors by providing recommendations on and assistance with parks and recreation related issues. The PAC is advisory only, and does not have any decision-making authority.

This meeting is being held in accordance with the Brown Act as currently in effect and in compliance with the provisions of AB361 (Rivas), that allows attendance by members of the Board of Directors and Committees to conduct and participate in meetings of the legislative bodies by teleconference or video conference.

Members of the Public may participate via ZOOM online or by telephone:

[Join Zoom Meeting](https://dudek.zoom.us/j/91326191585)

Meeting URL: <https://dudek.zoom.us/j/91326191585>

Join by Telephone

Dial: US: +1 669 900 6833 or +1 929 205 6099

Meeting ID: 913 2619 1585

CALL MEETING TO ORDER AT 7:00 p.m.

ROLL CALL

Committee Members: Richard Barker (Chair), Patrick Tierney (Vice Chair), Susannah Cantrell, Fran Pollard, Michelle Dragony, Lyle Coffield, and Ethan Rayner.

Staff Members: Delia Comito, GCSD Asst. General Manager

GENERAL PUBLIC PARTICIPATION

The Committee will take public comments on parks and recreation related subject matter not on the agenda. Limit is 3-minutes per person. (No discussion or action can take place).

ACTION AGENDA

Est. Time

- | | |
|--|-----------------|
| 1. Discuss Results of Public Outreach Plan for Potential Disc Golf Course on CUSD (Sonora) Property and Recommendation to GCSD Board. | 40 Mins. |
| 2. Discuss Parking Mitigation at Quarry Park. | 10 Mins. |
| 3. Discuss Recreation Programs. | 5 Mins. |
| 4. Schedule Next PAC meeting. | 5 Mins. |

ADJOURN MEETING

Est. 8:00 p.m.

This meeting is accessible to people with disabilities. If you have a disability and require special assistance related to participating in this teleconference meeting, please contact the District at least two working days in advance of the meeting at (650) 726-7093 or via email at dcomito@granada.ca.gov.

ITEM #1

**GRANADA COMMUNITY SERVICES DISTRICT
PARK ADVISORY COMMITTEE**

AGENDA MEMO

To: PAC Members
Regarding: Disc Golf Proposal
Date: August 29, 2022

Attached for this Item is the PAC proposal dated 4/6/22 , the Q&A sheet, and the public feedback.



“Sonora-Sevilla-Coral Reef Area”

Disc Golf Course Proposal

April 6, 2022



Prepared for: Granada Community Services District

Prepared by: Disc Golf Subcommittee, Parks Advisory Committee

Michelle Dragony, Leonard Muise, Marty Smith and Patrick Tierney



Contents

EXECUTIVE SUMMARY

DISC GOLF IN GENERAL

What is Disc Golf?

What is a Disc Golf course?

How do you play Disc Golf?

Who plays Disc Golf?

Why do people like Disc Golf?

Is Disc Golf popular?

Where is Disc Golf played?

What does it cost to play Disc Golf?

What does it cost to install a course?

Is Disc Golf good for people?

Is Disc Golf good for the environment?

DISC GOLF AT THE SSCR Property

SSCR property, a good place for disc golf?

Preliminary course layout

Estimated number of users

Who would build the course?

Preliminary estimate of construction costs

Preliminary estimate of maintenance costs



Executive Summary

We are proposing the Granada Community Services District (GCSD) collaborate with the Cabrillo Unified School District (CUSD) on a project to expand healthy, outdoor recreation opportunities for our youth, and all residents on the Coastside. Locals have been asking the GCSD for years to establish a disc golf course. Disc golf is an internationally popular, low start-up cost, family-friendly sport for all ages and abilities. HMB High School has had a disc golf physical education class, but there is no public disc golf course in San Mateo County for students to play on. GCSD does not own land that would be suitable for a disc golf course.

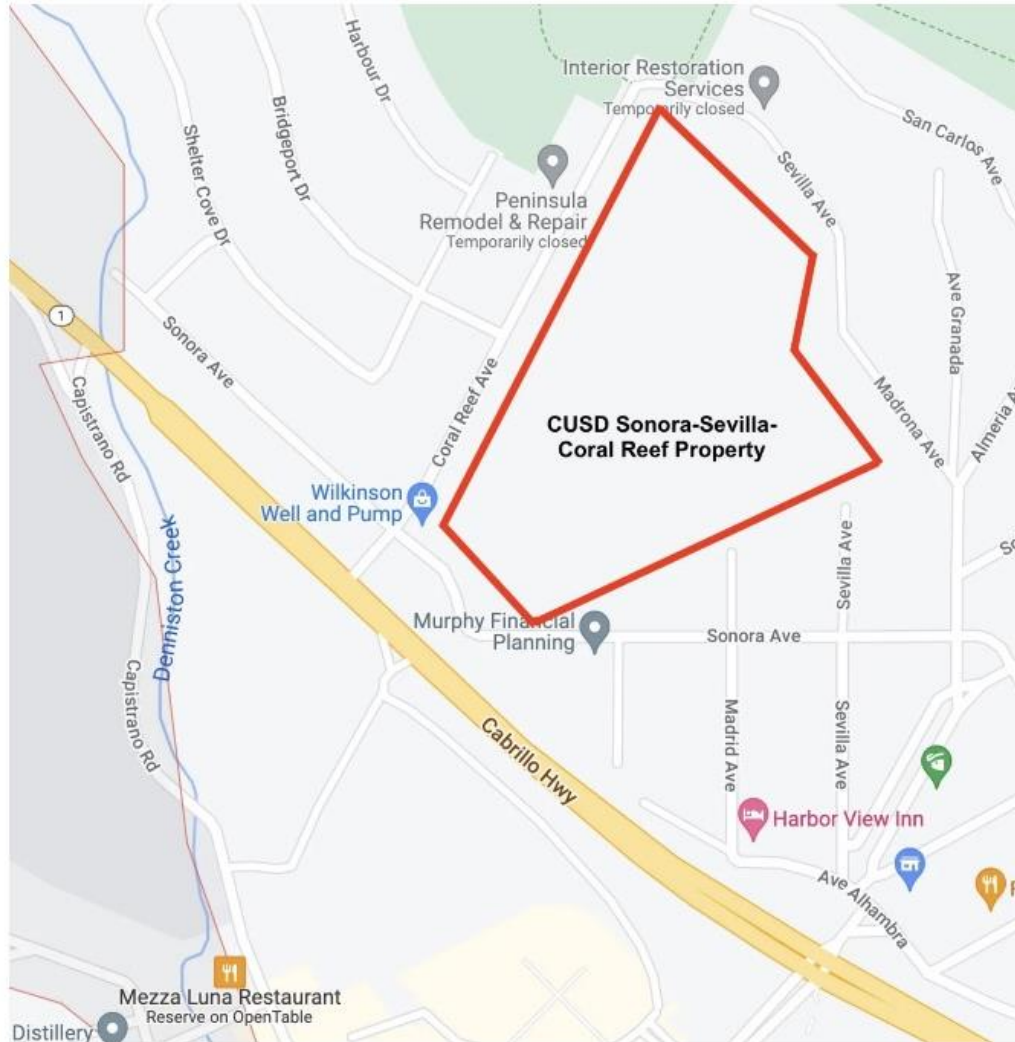
After a search of publicly owned lands in the area we have located an excellent site for a disc golf course. The so-called “Sonora-Sevilla-Coral Reef” area, (SSCR) is vacant land, owned by the CUSD in El Granada between Sonora, Sevilla and Coral Reef Avenues (see Figure 1), and classified as “Surplus Property.” It would provide outstanding opportunities for a disc golf course, as we will describe later. Currently, there is occasional unapproved, informal walking, dog walking and bicycling use of this property. The school district is considering options for use of this parcel, including the building of teacher housing. We recognize that the CUSD wishes to keep its options open for use of this property, so the district does not want any permanent structures placed on it by others.

The Disc Golf Subcommittee is proposing GCSD build and maintain, at no cost to the CUSD, a disc golf course

on the school district’s SSCR property which would be free for public and student use. As described later, it would be a smaller “Community Course” designed to provide primarily for the needs of the Coastside, and not so large as to draw many persons from outside the area. The specific terms of use and responsibilities would be spelled out in a Memorandum of Understanding (MOU) between the CUSD and GCSD. Details would be worked out at a later time, but initially we propose the MOU cover a ten year period, during which the school district could require the GCSD to remove any recreation improvements at their cost if notified the CUSD wished to pursue other options with the land. The MOU should also give the GCSD the option to continue disc golf use of the property after 10 years, by agreement of both parties. We propose the GCSD would conduct limited tree, brush and grass maintenance only on those portions of the property to be used by disc golf players, while the CUSD would continue to be responsible for tree maintenance on other parts of the “SSCR” property, like what they do now. A final proposal and MOU would need to be approved by GCSD and CUSD Boards prior to any commitments and construction.

The proposed disc golf course is compatible with and does not present safety issues for the existing informal recreation users (many disc golf courses are located in multi-use open space/parks). We do not believe neighbors of the parcel would be significantly negatively impacted by this new recreational amenity or its users, as described later in this document.

Figure 1. Sonora-Sevilla-Coral Reef Property



Exec Summary *(cont'd)*

The Park Advisory Committee and GCSD would conduct a public outreach effort to seek and include public comments about this proposal before it is finalized. They would also pursue permits needed from the State of California, San Mateo County and other local entities.

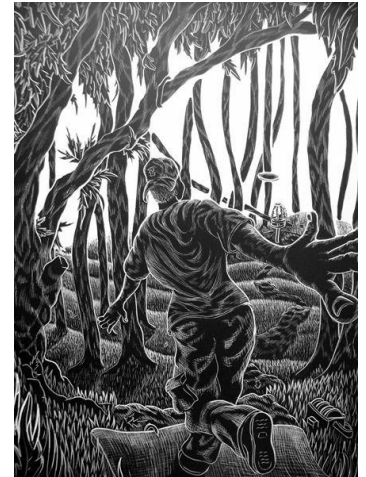
In keeping with the “Community Course” spirit of the project, it would be designed by a professional disc golf course designer donating his time and expertise and primarily built and maintained by community volunteers. We estimate between 2,000 to 5,100 rounds of disc golf will be played per year.

We believe the proposed course, like the 10 most recent new Bay Area disc golf courses, would be build 100% by volunteers. The cost of materials and supplies used during construction, when it was not donated, would be covered by the GCSD. As described later in the proposal, using a community model, we estimate the proposed 12 hole disc golf course would cost between \$13,000 and \$34,000 to build, depending on if volunteer labor and donations are used, or if a licensed contractor is utilized. It could be built over a month period (after MOU approval and permits are acquired). Annual maintenance costs would be about \$5,000, more if there are large tree falls on the course which must be removed. The cost of bi-weekly trash/recycle bin servicing is included.

The GCSD currently has a liability insurance policy which would be used to cover the proposed recreation facilities use. The CUSD would be an additional insured. The GCSD would pay the CUSD an annual property use fee.

The preliminary twelve-hole disc golf course would provide an excellent opportunity for local students to practice the skills they learn in the HMB High School disc golf PE class and encourage them to get outside and engage in a healthy recreation activity. This course would offer desired recreation opportunities to a wide span of the community, both young and old, low and upper income. We see this as a win-win situation for our students, the CUSD, GCSD, and the community.

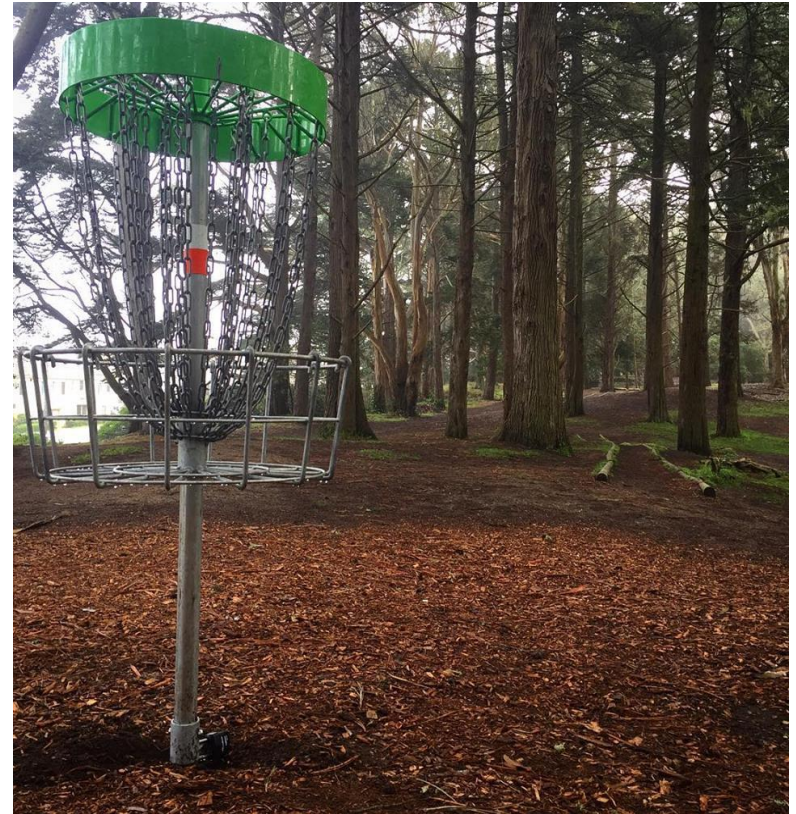
We urge the GCSD to move this proposal forward, negotiate an MOU with the CUSD and provide funding to allow community volunteers to build and maintain the proposed disc golf course on the vacant Sonora-Sevillia-Coral Reef property. This would create a needed new healthy, free, outdoor recreation opportunity for CUSD students and GCSD and Coast-side residents in these COVID times.



What is Disc Golf?

Disc golf (aka Frisbee golf) is a fun, inexpensive, healthy, and environmentally friendly game that can be enjoyed by people of all ages and abilities.

It is played much like traditional golf. Instead of hitting a ball into a hole, you throw a disc into an elevated metal basket.

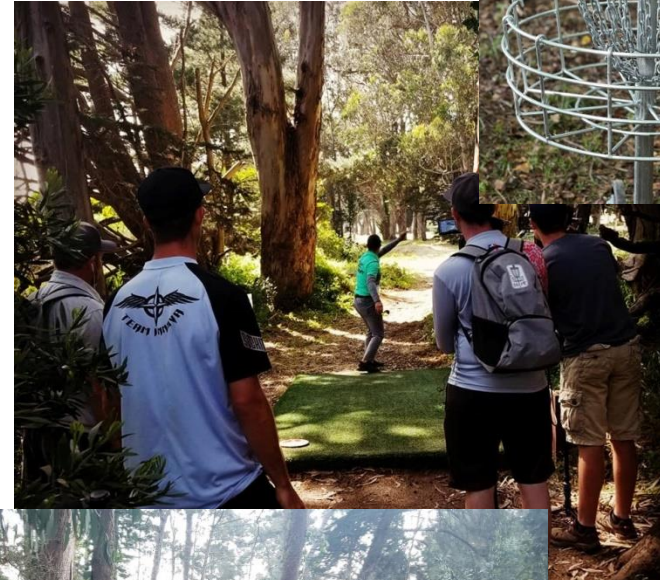


Golden Gate Park

What is a Disc Golf Course?

A typical disc golf course consists of three basic components: baskets, tees, and signs – one set of components per hole.

- Galvanized disc golf baskets, about 5' tall, slide into below-ground collars anchored in concrete. Multiple collars on each hole help to create variety and disperse foot traffic.
- Tee pads are 4-6' wide and 8-12' long, made of concrete, pavers, turf, or rubber. Minor retaining/drainage may be needed.
- A small sign is placed near each tee to identify and illustrate the hole. Additional signs may include an information board, directional signs, and welcome signs.
- There is no major infrastructure involved in most course installations. The health of the natural environment is preserved.



How do you Play Disc Golf?

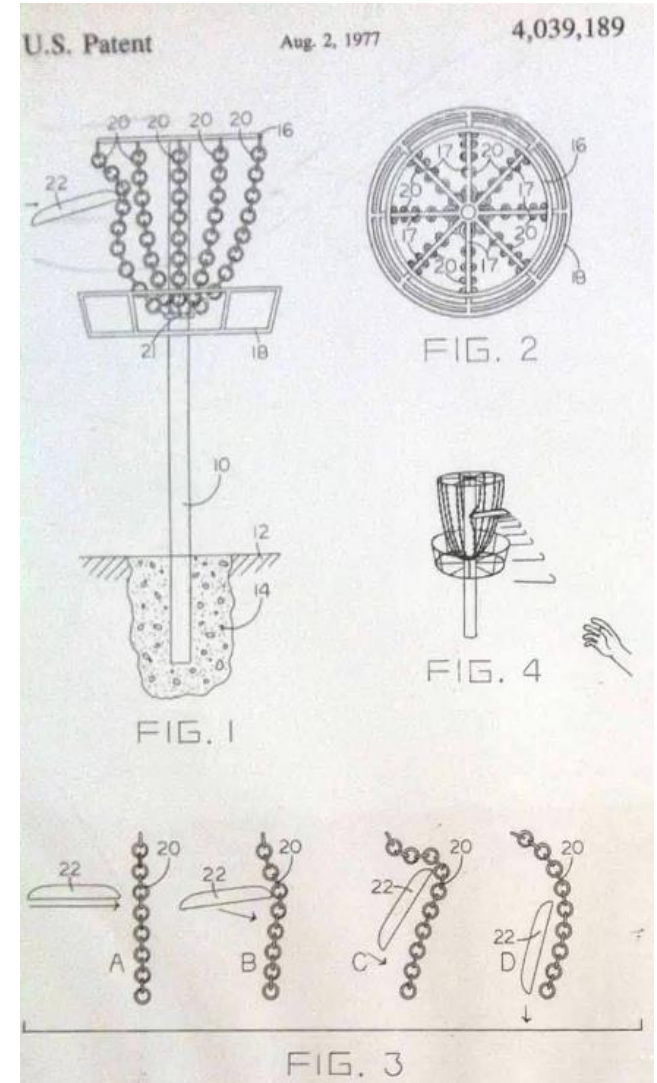
The goal of disc golf is the same as traditional golf: To finish the course in the fewest shots.

As players progress from the “tee” to the “hole,” the trees, wind, water, and elevation changes provide challenging obstacles along the “fairway.” Each throw is made from where the previous throw came to rest. Finally, a “putt” is tossed in the basket to finish the hole.

Courses typically have 9 or 18 holes, but other numbers are not uncommon.



Golden Gate Park

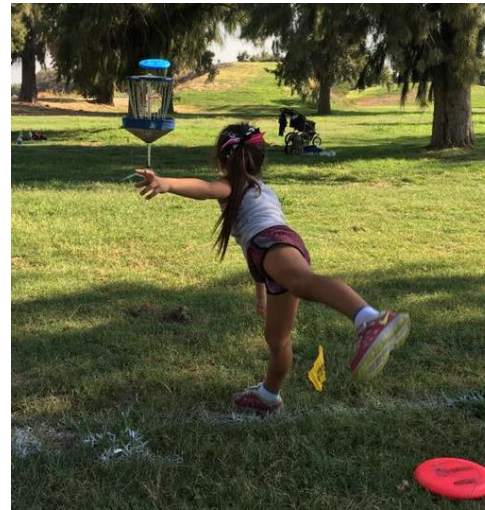


Who Plays Disc Golf?

EVERYONE!

Frisbee-throwing is universally familiar; throwing a golf disc is easy to grasp and enjoy.

Anyone – any age, gender, or athletic ability – can play and have fun.

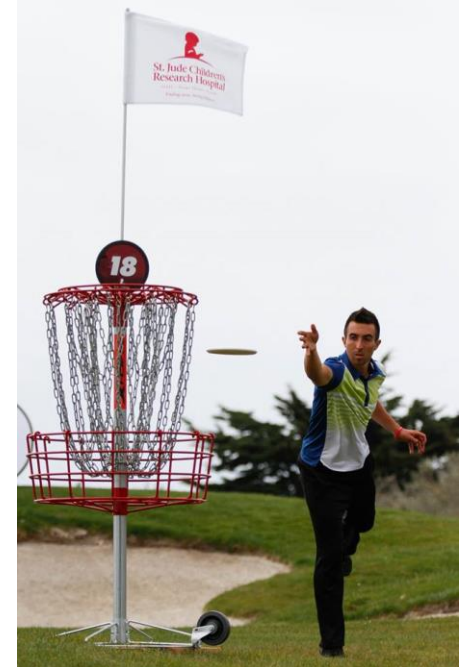


Who Plays Disc Golf? *(more!)*



Why Do People Like Disc Golf?

- Easy to learn
- All skill levels can play together
- Athletic & challenging
- Enjoying nature
- Good exercise
- Affordable
- Watching discs fly
- Informal and formal competition
- Being with friends & family
- Making new friends
- Giving back to the community



Is Disc Golf Popular?

The first official disc golf course – featuring the newly standardized “pole hole” baskets – was established in 1975 at Oak Grove Park in Pasadena. Since then, course and participation growth has been steady and strong.

Today, there are ~13,000 disc golf courses being played in 40+ countries, with ~75% in the U.S. Most U.S. courses opened in the last 10 years.

The Professional Disc Golf Association (www.PDGA.com) sets the rules and standards, sanctions big competitions, and promotes the sport for all skill levels. The PDGA is funded by its ~200K members, mostly “amateurs”.

An estimated 3 million people play disc golf at least once a month, including about 15,000 people in the greater Bay Area. There are a number of disc golf courses that serve the Bay Area, but none on the Coastsides.

Where is Disc Golf Played?

Most disc golf courses are in public parks and open space. A disc golf course can comfortably share space with other pass-through activities like walking, dog walking and biking.

Disc golf courses often utilize less developed areas with lower levels of activity, separate from park areas dedicated to active recreations such as playgrounds, softball, soccer, swimming, and sports courts.

Unlike traditional golf, disc golf is a low-impact activity which utilizes and sustains the existing landscape and environment as-is. The trees, shrubs, wind, water, and elevation changes are essential to a good experience, as they provide aesthetic and challenging obstacles along the way.

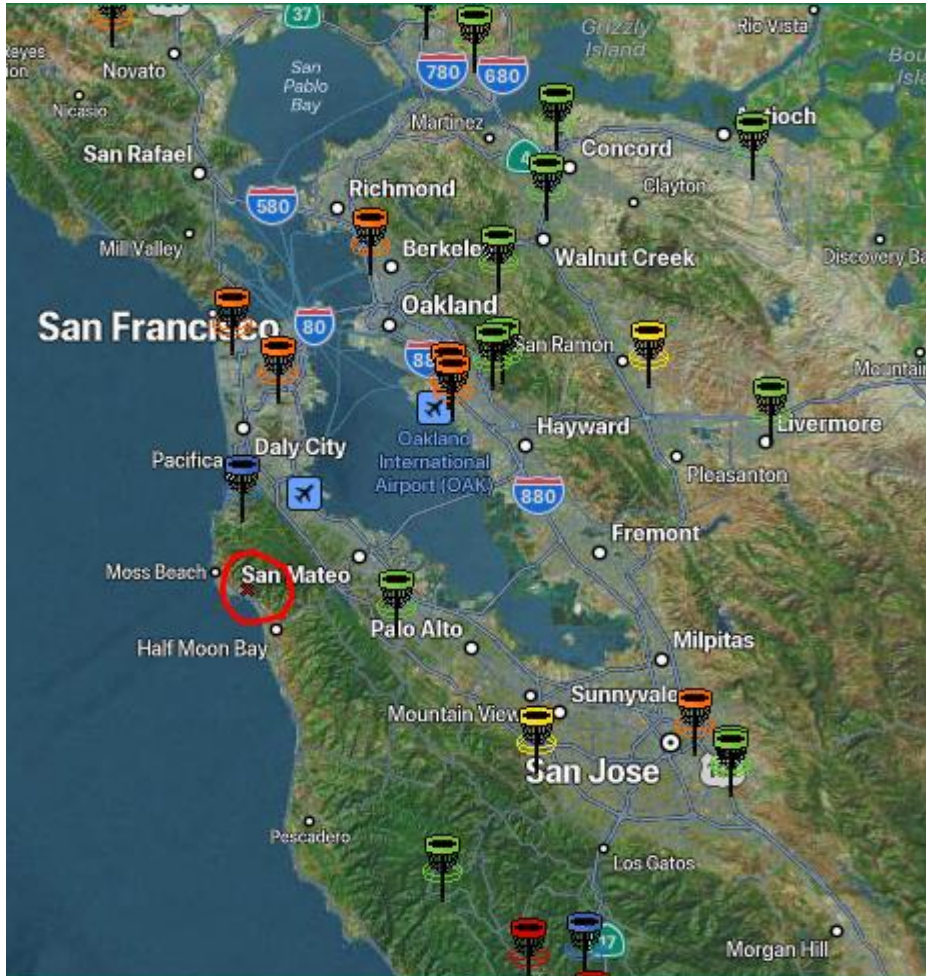
In public parks and open space across the Bay Area, disc golf has shared space amicably and sustainably for almost 40 years.



Benicia

Where are the Local Courses?

There are 45 disc golf courses in the greater Bay Area, but only 4 on the Peninsula. The closest, in Pacifica, is an unappealing 4-hole layout with trash cans for baskets.



Next closest are two expensive disc golf courses on traditional private golf properties: Emerald Hills in Redwood City (9 holes) and Gleneagles in San Francisco (18). These are not very close, ideal for beginners, nor affordable for families.

Golden Gate Park has a great 18-hole course – free to play, fun for all abilities. But it's 45+ minutes away.



How Much Does It Cost to Play?

Most disc golf courses are free to play. Most are located in community open space or parks where parking is also free, but some county and regional open space and parks charge for parking. A few disc golf courses are private, charging fees from \$5-25 for 9-18 holes. Emerald Hills in Redwood City charges \$15/person for 9 holes of disc golf.

The only essential equipment is a golf disc, starting new around \$10.

Only one disc is needed; three discs is plenty for beginners. Avid players may carry 15-25 discs with different shapes, weights, and plastics. Each disc flies uniquely.



Is Disc Golf Safe?

Golf discs are more compact and flatter than regular Frisbees. They are intended for controlled flights on a disc golf course, not for playing catch.

Serious injuries are extremely rare, particularly an injury to someone else using the open space/park. Each year, about 4 *trillion* disc golf throws are made in public parks (8000x365x30x50), but serious injuries occur roughly once every 2-3 years across the entire sport.

The main reason injuries are rare is because, historically, most courses are located in public open space/parks. Patience and courtesy have become an intrinsic to disc golf's culture. Players wait for the space to clear before throwing.

Experienced course designers know how to make the extremely low risk even lower. They are experts at predicting flight patterns and dispersion for all skill levels. They study current park usage. They account for various environmental factors.



Aquatic Park, Berkeley

Does Disc Golf Impact the Environment?

Unlike traditional golf, disc golf courses use the existing landscape as-is, without any grading or cutting. The trees, wind, water, and elevation provide attractive and challenging obstacles. We are committed to sustaining the environment because it makes the sport more fun.

Nonetheless, disc golf does impact the environment in two ways. First, the basic challenge is to throw discs past obstacles – and sometimes you hit them. (Without trees, disc golf would be as boring as tennis without a net!) Designed well – e.g., tees are located only near sturdy or protected trees – the trees' viability is ensured. The only risk is minor aesthetic damage.

Second, disc golfers walk throughout the course, trampling ground cover and some brush, especially near tees and baskets. Depending on the terrain and usage, soil erosion may occur. Simple mitigations include multiple basket sleeves, planned pathways, and wood chips.

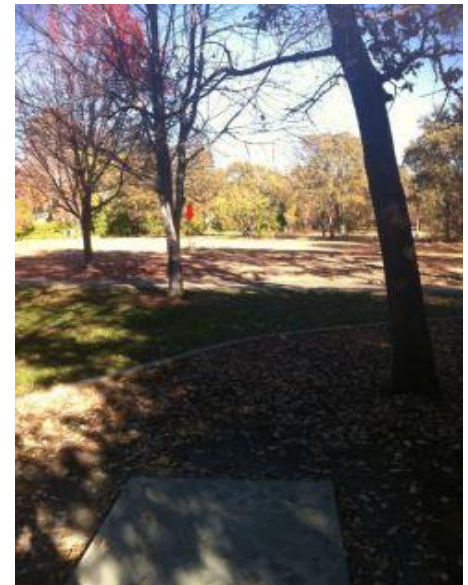
Overall, as demonstrated at other Bay Area courses, the ecosystem will perform as it did prior to disc golf's arrival – no major impact.

Whether the minor impacts are worth the recreational and health benefit may depend on the comparison. For example, baseball and soccer require removing all natural landscape and habitat. On the other hand, hiking on existing paths does not nick trees or create newly worn paths.

Disc golf's tradition of stewardship often results in improvements to the environment where it is played. Most disc golfers don't litter. Moreover, they often plant trees, help clean creeks, and inform staff of issues.



Golden Gate Park



Walnut Creek

How Does a Course Change Open Space?

For the vast majority of park and open space users, a course has little or no impact on their usual experience. They can still walk, ride, play, and relax as they did before. Dog walking is commonly done through disc golf courses. The main difference is that there are a few more friendly people to say “Hi!”

A typical disc golf course is usually quite peaceful. Typically, a community course has 3-4 people playing, maybe 10-12 in the late afternoon if the wind isn't too strong. On the rarest days when the course is full (2-5 people per hole), that means 2-10 people per acre depending whether the layout is compact or spread out. Most courses don't have big events.

Parking needs are roughly one vehicle for every two players – i.e., 2-4 cars most of the time, with 10 cars on rare days.



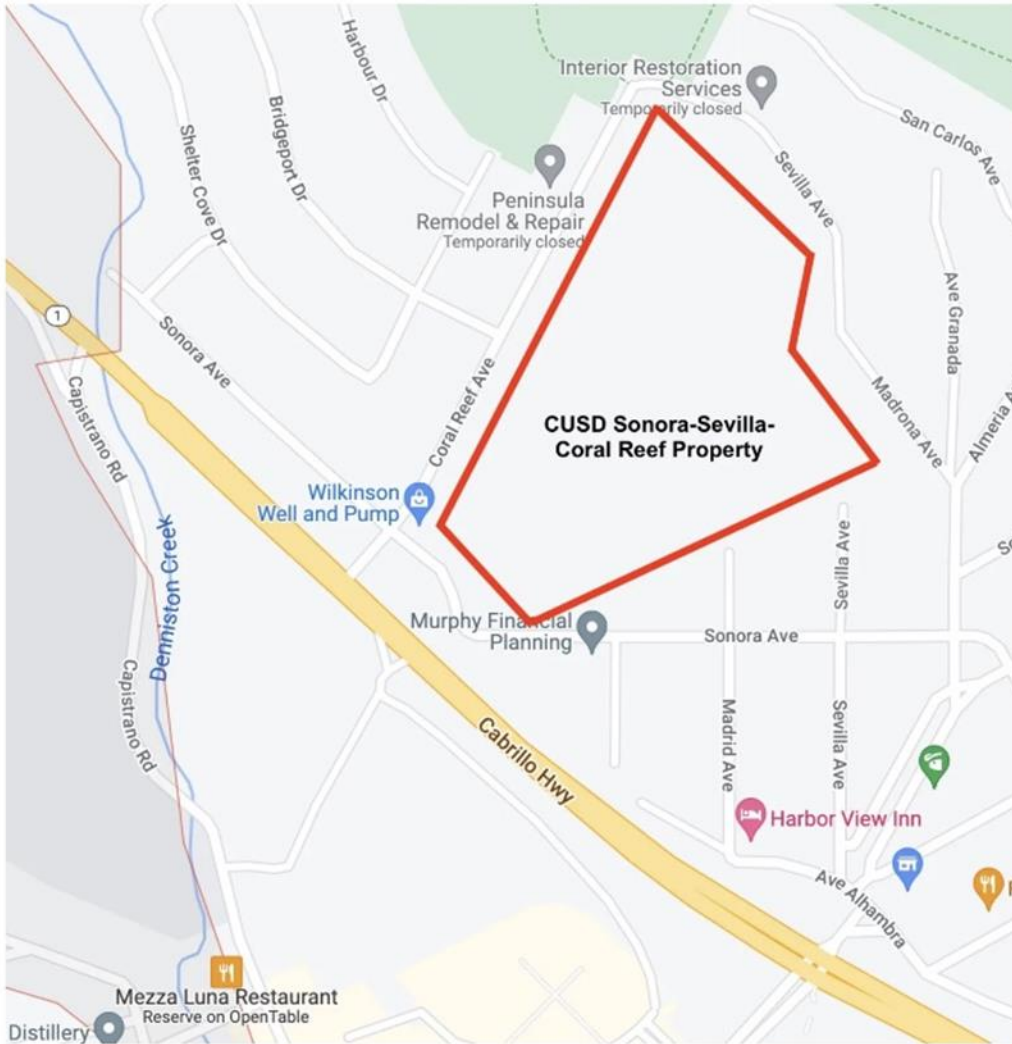
Periodically, most clubs perform minor maintenance -- spreading wood chips, improving paths, picking up trash, etc.

Disc golfers often adopt the open space/parks where they play. They get to know the other regulars. They keep an eye on things. Their regular presence tends to discourage troublemakers.

Disc Golf at the “Sonora Sevilla-Coral Reef” Property



Figure 2. Sonora-Sevilla-Coral Reef (SSCR) Property, El Granada



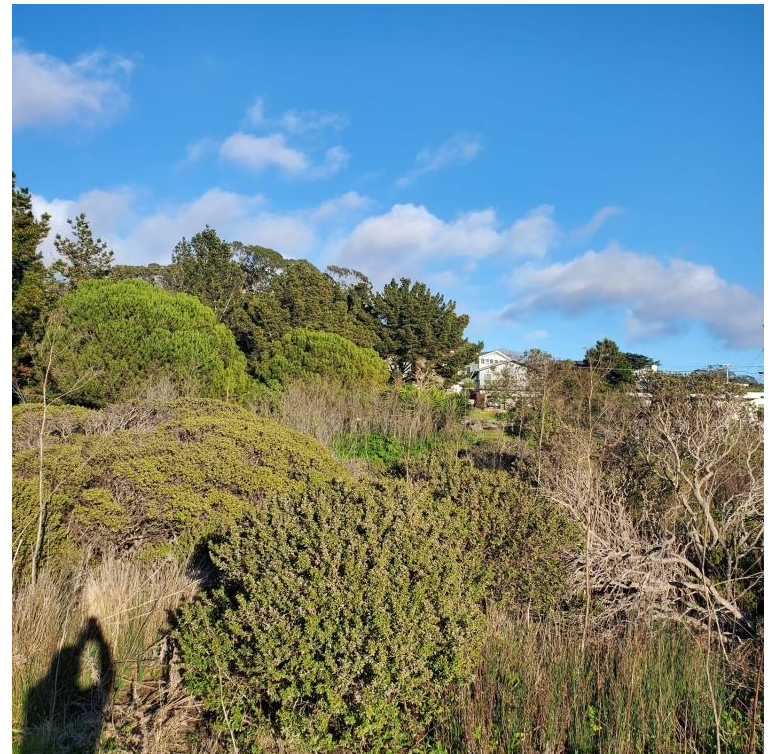
The SSCR property is vacant land, owned by the Cabrillo Unified School District in El Granada, between Sonora, Sevilla and Coral Reef Avenues, and classified by the school district as Surplus Property. Currently, there is occasional informal dog walking, bicycling and walking use on this property.

SSCR: A Suitable Location

Good sites for disc golf have certain fundamental characteristics, many of which are common to any recreational feature in a park or open space:

- Enough space to play without significant detriment to other activities: typically, 1/2-acre per hole for community courses – shared space! – and 1-2 acres for advanced courses.
- Good variety of obstacle distribution (typically trees and water): areas with lots of obstacles (“technical” in disc golf parlance), moderate density, or “wide open”.
- A habitat which can thrive with a course, including mitigations for foot traffic, tree deflections, and soil erosion as needed.
- A lack of severe risks or nuisances – e.g., extreme slopes, rampant poison oak, busy streets, dangerous wildlife.
- Reasonable access and operation – e.g. pathways, areas for trash bins, parking.
- Natural beauty.
- A community that wants to play!

The Sonora-Sevilla-Coral Reef (SSCR) property shown in Figure 2 has all of these characteristics.



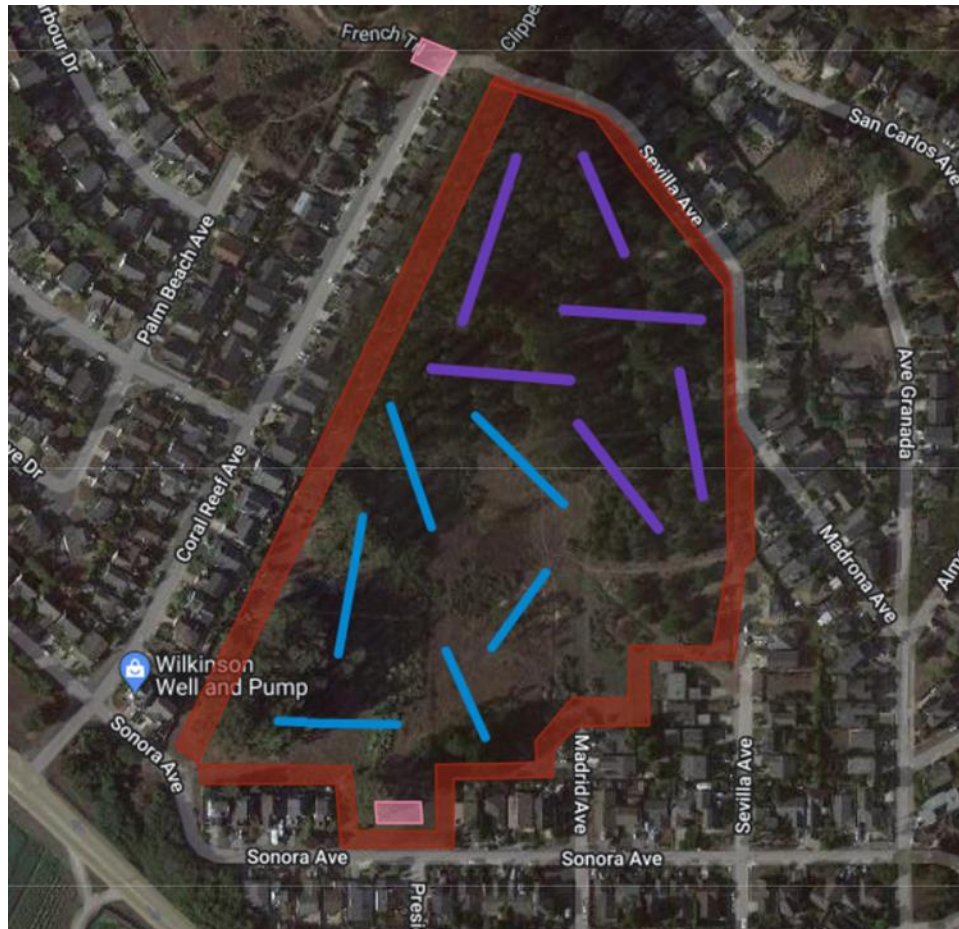
Preliminary Disc Golf Course Design

For demonstration purposes a preliminary disc golf course layout, shown next in Figure 3, has been developed for the SSCR area. This layout was created by Leonard Muise, a nationally known disc golf course designer. This design can be modified to accommodate agency and public input. Features include:



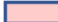

- A 6-hole beginners' course and a 6-hole advanced course, for a total of 12 holes/baskets.
- Use of on-site trees and shrubs as obstacles to provide different levels of “technical” difficulty
- Tee boxes and tee signs
- On-site vegetation is used to screen users from others. Minimal vegetation clearing needed.
- Buffer zone to maintain adequate distance from neighbor property
- Two locations for waste/recycling receptacles, if these are deemed necessary
- Two locations for off-street parking



Figure 3. Preliminary Disc Golf Course Layout



Legend

-  Beginner Course Hole & Fairway
-  Intermediate Course Hole & Fairway
-  Potential Off-Street Parking
-  Boundary of CUSD "Sonora Strip and Buffer Zone Near Houses"

Design and layout created by Leonard Muisse,
whirlwinddiscgolf@gmail.com

Leonard Muisse, Professional Course Designer

World renowned disc golf course designer. 40-year Bay Area resident.

Local courses include Golden Gate Park & Oyster Bay Regional Shoreline.

From the community's perspective, Leonard designs for multi-use compatibility and environmental sustainability.

From a player's perspective, Leonard designs for variety, challenge, visual interest, and easy navigation.

Whirlwind's goal is for the park to serve the community as well as possible, with disc golf providing just one part of a great overall outdoor experience.



Emerald Hills, Redwood City

Estimated Amount of Use

Disc golf is growing in popularity. There is an active group of disc enthusiasts on the Coastside. For a number of years HMB High School students have participated in a disc golf PE course. These Coastside persons we believe will initially be the primary users of the proposed disc golf course. Use will grow in the ensuing years as word spreads about the activity. The proposed preliminary, modest-sized disc golf course is designed as a “Community Course” and should not draw large numbers of persons from outside the Coastside.

We estimate between 15 - 35 persons will initially play at least one round of disc golf on the proposed course on a weekend day. Half that number are projected to use it during a weekday or during inclement weather. Based on these figures, we estimate the following number of disc golf users and rounds played.

	<u>Low</u>	<u>High</u>	
2023 Estimated Disc Golf Players Per Weekend Day	15	35	Players
<u>2023 Estimated Disc Golf Rounds Played</u>			
* Per Month Spring, Summer and Fall	180	420	Rounds Played
* Per Year	2,000	5,100	Rounds Played

The primary users of the proposed course will be local residents, and some will be walking or bicycling to it. We estimate the number of vehicles parking on a weekend day would be 3 - 8 cars. There are two existing areas on/near the SSCR property which could easily accommodate that number of cars for off-street parking. That amount of cars should have minimal impact on local traffic.



Cost

On a typical disc golf course, just the equipment and materials cost \$500-\$1500 per hole, depending whether the installation is bare bones – only mid-quality baskets – or shoots for higher quality, including common features such as tee pads and tee signs. Multiplying by 12, the cost for a 12-hole course for equipment and supplies ranges from \$6,000 to \$18,000 – around \$12,000 for a mid-level installation.

Whirlwind Disc Golf provides a convenient [cost worksheet](#) which enables anyone to explore the costs of various features at different quality levels and quantities.



Beyond baskets, tee pads, and tee signs, additional common costs include:

- welcome sign with course layout, rules, and etiquette
- directional signs (“this way to the next hole”)
- small landscaping enhancements – trail boundaries, retaining and drainage for tee pads on slopes, small platforms for elevated baskets
- practice basket for putting before/after your round.
- trash cans, benches

Preliminary Construction Cost Estimates

The following provides an initial picture of the costs for constructing the preliminary 12-hole course shown in Figure 2. All of the ten most recently built disc golf courses in the Bay Area have been constructed solely by volunteers and residents/businesses have made substantial donations of money and materials. Construction generally does not require use of heavy equipment, except for trimming large trees. Discussions with disc golf clubs and local players indicates there would be strong volunteer support, and also donations. We believe that, like all the others recent Bay Area courses, the Sonora Strip disc golf course could be 100% built by volunteers. Estimates below include costs of mid-level equipment and supplies. Two costing alternatives were developed to show the range of costs for construction.

A. Volunteer Built – It assumes volunteers will conduct all construction tasks from clearing necessary grass and brush, digging holes and placement of baskets, building tee boxes and placing tee signs. One day of a tree service company would be included to trim high tree branches. Cost of 3 trash dumpsters. GCSD would purchase equipment and supplies, when not covered by donations.
Alternative A Cost: \$13,000

B. Contractor Built – A licensed contractor would conduct all the construction activity. One day of a tree service company would be included to trim branches. Cost of 3 trash dumpsters for debris. GCSD would purchase equipment/supplies, when not donated.
Alternative B Cost: \$34,000

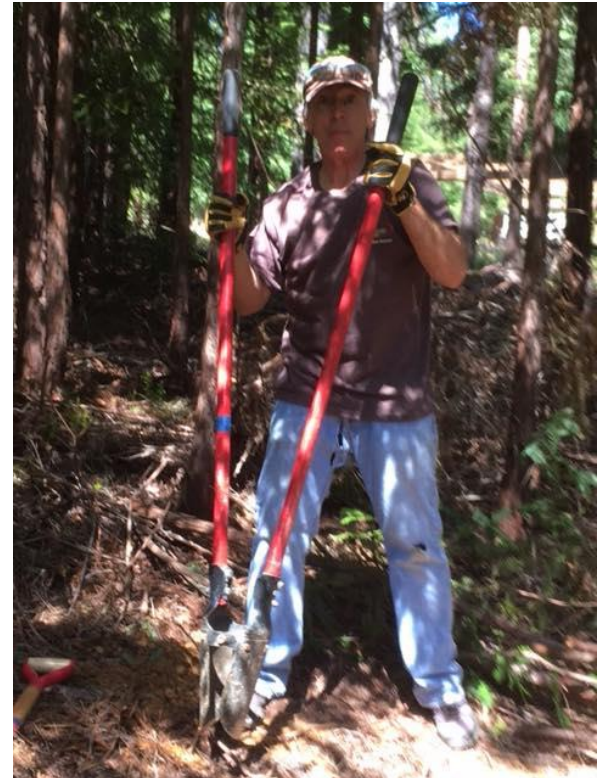


Installation & Maintenance

Most disc golf courses in the Bay Area were installed by volunteers working primarily with hand tools, sometimes including power tools such as a gas tamper or auger. Rarely, heavy equipment (read: bobcat) is required for leveling a couple tee areas or removing heavy overgrowth. Installation requires roughly 20-50 hours of volunteer effort per hole.

Once installed, maintenance is nominal. The baskets are sturdy, lasting 15-20 years without any maintenance. The tee pads, depending on the material, need only occasional sweeping of natural debris. The tee signs, again depending the type, usually last as long as the baskets.

Most maintenance effort consists of trail work and clearing fallen branches. At most courses, the local club holds “work parties” to keep the course in good shape. Ideally, club and park district establish a formal partnership which responsibilities and ensures consistent, long-term upkeep.



Preliminary Maintenance Cost Estimate

Experiences in the Bay Area have verified that disc golf courses require very little maintenance. No water is used, and no regular mowing is required. The initial estimate of the costs for maintaining the preliminary 12 hole disc golf course are based on the following assumptions: Volunteers would conduct all maintenance, including collection of litter and small branches from the course and around the holes, mowing grass along holes in spring and fixing/replacement of broken or vandalized course features. The exceptions are three trash/recycle bins which would be placed on the property and would be served bi-weekly by a contracted company. A professional tree service company would be needed to trim any large trees/branches that fall on the course, and this would be on an as needed basis. GCSD or disc golfers would not be responsible for maintaining trees or other property features which are not used for disc golf. If there are large trees which fall on the course, then there would be a higher maintenance cost.

Estimated annual maintenance costs for the preliminary course layout is \$5,000



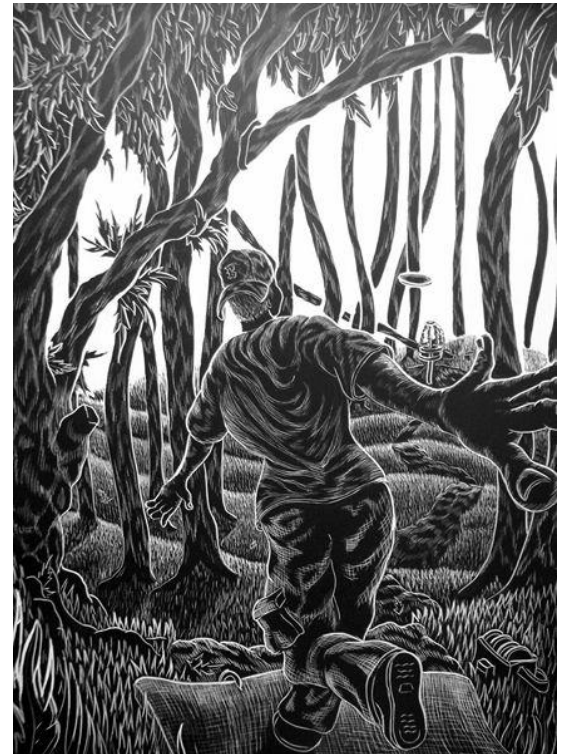
Final Thoughts

Disc golf can provide a great complement to the other recreational experiences on the Coastside, particularly activities which provide healthy, affordable fun for younger and older community members. No near-by courses exist, while there is substantial demand for disc golf by HMB High students and local enthusiasts.

The subcommittee believes the “Sonora-Sevilla-Coral Reef” property would be ideal for a 12-hole disc golf course, such as the one identified. We are confident the course will preserve the natural beauty of the current location and have no large adverse impacts on neighbors, and we’ll seek their input. We expect it may actually enhance the look and feel of the SSCR area by discouraging encampments, reducing overgrown non-native species and increasing community stewardship for this wonderful space.

Construction and maintenance costs are reasonable and will be reduced through the use of committed volunteers and donations.

We look forward to working with GCSD and CUSD staff, area users and neighbors for the successful planning, installation, and maintenance of a great new disc golf course!



Questions and Answers About Proposed El Granada Disc Golf Course

1. **How will this affect the surrounding neighborhood? (Parking, noise, early AM use?, etc.)**

See the full proposal for details. See all questions and answers below for more explanation. We expect the use levels to be low to moderate, a maximum of between 15-25 players per weekend day and less on weekdays. Most of the users will be local residents. No large disc golf events will be hosted at this site. It is not possible to play disc golf after sunset. There are numerous off-street parking areas. Current dog walkers, hikers and bicyclists will be able to continue as they have been and should not be affected by disc golf activity. Therefore, we do not anticipate any significant adverse impacts to the surrounding neighborhoods.

2. **How will this affect current users of the property?**

Current users -- e.g., dog walkers, hikers, bikers -- will be able to continue using the space as they do today. The course will be designed to minimize discs flying along well-established paths. Where flights may potentially encounter other users, disc golfers are accustomed to waiting until other visitors move out of the way. Most of the 40+ disc golf courses in the greater Bay Area are located in "mixed-use" spaces -- where disc golf is played, safely and enjoyably, successfully sharing the space with other pass-through activities. See the proposal for more details.

3. **Will discs fly into yards?**

Extremely unlikely. A professional course designer will lay out the holes so that no "tee" shots fly toward homes. In addition, there will be a wide buffer zone between course play areas and any houses.

4. **Will trees need to be cut?**

No healthy trees will be removed. Some dead trees and fallen (or hanging) branches may be removed for safety reasons. Trees are an essential part of the game, providing aesthetic beauty and obstacles to curve around. Disc golf is most enjoyable in a thriving environment.

5. **Will this proposal increase wildfire danger?**

Very unlikely. There's nothing about disc golf that would generate more fire risk than current types of usage. There have been no reports of player-caused fires at any of the 40+ disc golf courses around the greater Bay Area -- some of which prohibit smoking, as would be prohibited here too. As an additional mitigation, there is a proposal to regularly mow a 50-foot-wide strip of vegetation along a boundary between the course and the homes.

6. **Will the course and property be maintained?**

Existing trees and shrubs will persist as they have in the past; no irrigation or maintenance is required. The CUSD proposal is to mow native grass around the boundary once or twice a year -- as a fire mitigation. GCSD will maintain the areas used for disc golf. very little maintenance will be needed for disc golf features. Volunteers from a local disc golf club will do general maintenance; a licensed tree service for tree work; and a licensed mowing company for mowing. Occasionally, we'll

need to remove fallen branches and other natural debris from areas where discs often land. Frequent, regular maintenance will consist entirely of emptying trash cans. See the proposal for more details. The course equipment (tee areas and the targets) will require simple, infrequent maintenance -- raking the tee areas occasionally, replacing any damaged targets/baskets.

7. **Will disc golfers leave a lot of trash on the course?**

Avid disc golfers tend to be enthusiastic stewards of the places they play, picking up others' trash and actively assisting with community improvements. Less experienced players, however, are just like other folks -- some are conscientious, some are not. Trash has never been a serious problem at other Bay Area courses with below-average rates of play.

8. **Who plays disc golf? Who will play this course?**

Disc golf is inexpensive and easy to learn, so everyone can play -- all ages, all levels of skill. It's most popular with young people. This course will be a relatively small and humble course, located farther from heavily populated areas than most Bay Area courses. Most of the players will be locals, especially those who play the course regularly. The HMB High School has a disc golf PE class.

9. **Is disc golf similar to traditional golf -- expensive and exclusive?**

Disc golf does share a lot of concepts and terminology and rules with traditional golf. But disc golf is far more accessible (inexpensive) and welcoming (inclusive).

10. **Who is sponsoring and paying for the course?**

See the proposal for details. The Granada Community Services District is proposing the disc golf course in collaboration with the Cabrillo Unified School District (CUSD), the property owner. GCSD would lease the land from the CUSD, fund the construction and maintenance of the course with the help of community volunteers and donations.

11. **What will be the cost to play the course?**

No fee, it will be free to the public. Everyone will need to provide their own discs.

12. **Will there be big events here with lots of cars and noise?**

All of the disc golf activity will be organic, informal -- individuals and small groups playing whenever they like. Nobody is envisioning any big events -- and, even if they did, such events could not be held without proper approval, and public comment opportunities.

13. **What will happen to the parking of vehicles, trailers, and other non-conforming uses of the property?**

That will be up to the School District to decide. Currently the proposal is to block motorized vehicle access with logs and upright posts at easy entrance points. This will allow quick access by non-motorized users.

**Public Comments on Proposed Disc Golf Course In El Granada, By District
As of 8/21/22**

Method: On June 19, the GCSD Parks and Recreation webpage described a proposed disc golf course in El Granada and asked for public comments. A link to a special disc golf proposal webpage was placed on the P&R webpage. Starting on July 21, 2022, a flyer announcing the disc golf proposal and asking for public feedback was placed in the El Granada Post Office, flyers were placed on the doorstep of every house (62) along the perimeter of the CUSD parcel under consideration, six signs were placed along neighboring streets, information was placed on the El Granada Nextdoor, sent to the HMB Review and Coastside Buzz, and an email with the flyer was sent to the public mailing list of GCSD by PAC members.

Once public comments started coming in, a member of the Disc Golf Subcommittee of the GCSD Parks Advisory Committee read each comment from the general public, received by the district between July 21 and the present, assigned an evaluation to the overall tone of the comment, either “*Yay, Let’s Build It,*” to “*No, I have concerns.*” They then placed the verbatim response (without names) in the listing shown below. An attempt was made to assign comments into three residence categories: 1) Live In GCSD; 2) Live on Coastside Outside of GCSD; and 3) Live Outside of Coastside. The Coastside is defined as residents from Montara south to and including Half Moon Bay. It was not always possible to determine the residence of the commentor from their email, so the reviewer placed the response as best they could determine into one of the residence categories.

Comments classified as Yay, Let’s Build It, By Residence District/Location

Live in GCSD

I wanted to give some feedback pertains to the proposed Disc Golf Project.

Our property located at ___ Coral Reef Ave borders the proposed project and I think the proposed Disc Golf Project is a great idea. I have lived at our current address for 46 years and one of the things the coast has always lacked was recreational areas for kids.

I see it as an opportunity to provide a fun and exciting place that kids and parents can take their children.

Note, most people have the wrong idea about the proposed project thinking it has to do with some kind of golf course, recommend clarification as to the proposed name.

Great idea,

The proposed disc golf course is such an awesome thing for this community. It’s great we just saw the pump track go in and it has been nothing short of wonderful. Disc golf would be another epic addition to our town that has suffered from low recreation spending. These activities get people outside and bring them together in the healthiest greatest ways. My 7 year old daughter keeps bumping into her past kindergarten buddies almost everyday she goes to the track. These recreations are vital to any community and especially ours here in El Granada. Please don’t let the selfish NIMBYs ruin another terrific idea for our coastside community. I support the EG Disc Golf course 100%!

I am writing to voice my support for the Disc Golf course in El Granada. I have lived in El Granada for 20 years now and I’m very excited that we will have this recreational opportunity in our town. I started playing the sport a few years ago and now consider myself an avid player. I quickly realized how beneficial the sport is for many different types of people. I’ve seen high level experts and recreational level players just out for a day outside. I’ve seen families out together enjoying themselves. Most of the courses I’ve

played are multi-use parks and have never once seen a bad interaction between the users of the park. It is a sport that lends itself quite well to being able interact with different users like dog-walkers, runners, walkers, bikers, picnickers, etc. It is also important to note that disc golf can be played on a relatively natural course unlike ball golf which requires very manicured greens and lawns.

I'm an El Granada resident since 2009 (currently living at 237 Del Monte Rd.), and I strongly support the new proposal to build a local disc golf course. I love disc golf and have long been confused and frustrated why the nearest courses are as far away as SF or Santa Cruz, since I know intuitively it would be such a good mix for the culture and landscape of the HMB / EG area. I jumped out of my chair when I saw the proposal, because the parcel of land you identified is ideal both in size and location. I would gladly volunteer to help with construction, advocacy, or whatever else I could contribute to help get this done soon and well. I know my kids and I would walk or bike to this location and play frequently and bring friends, and then probably walk into the harbor or to other nearby shops / cafes afterwards. In short, THANK YOU for this proposal, I really hope it gets done, and let me know what supporters like me can do to help ensure its success!

I am writing to support the movement to install a disc golf course in our town. I am 24, I have lived here since I was 5. Growing up here, I spent a lot of time roaming around the area which is now being proposed as a spot for a course. This area has always been lightly used, and is ready for some more action. It is a perfect little nook for this simple game.

To advocate for the sport/hobby, frisbee golf is a casual game, easy to pick up, all inclusive, family friendly, low cost, and all around fun. The greater HMB area has often been missing easily accessible, low cost options for organized recreation. I know that a lot of people my age are discouraged by the lack of this, and it seems like a major reason that young people are becoming more and more disenchanted to remain living in this town. We are losing our youth.

To summarize, this course is an easy, low maintenance addition in an underused area. I never see anyone having a bad time when they are throwing frisbees. This will encourage recreation and community here on the coast, it will engage young and old folks to be outside, and it is one of the most accessible sports around. I hope you will strongly consider the creation of this course, I know it would benefit our community greatly.

There are a number of us parents on the coast that go to the Golden Gate Park disc golf course (and others around the Bay Area) but it becomes time prohibiting with our weekend traffic.

I have found that the disc golf community takes ownership of their local courses and having a course so close to my home, I would accept a large part of volunteering to make the course successful and and maintained.

Yesterday our HOA had a Zoom meeting to discuss the proposal with the neighborhood. A number of residents had concerns about parking, traffic, fire safety, proximity to there property, and shared access for hiking and dog walking. Although I feel that many concerns are mostly a fear of the unknown and a bit of NIMBY, their concerns should be respected and I would hope that maybe some outreach to owners of the adjacent homes could be offered to clear up concerns. Many of the concerned have houses that have "incorporated" some of the property into the school property.

Again, thank you for making our community such a great place to live.

We live in the neighborhood and often walk through the proposed disc golf course area in El Granada. This is a wonderful idea and will provide great recreational opportunities for everyone from kids to seniors with no negative impact on the neighborhood. Please build this disc golf course and we will use it!

I am looking forward to another spot on the Peninsula to play this wonderful sport! If the proposal is approved, I would gladly volunteer my time to help build the course.

Thank you for pushing forward with trying to improve our community with more recreation. I am a home owner in the Clipper Ridge neighborhood and am in full support of the proposed disc golf course. The proposed location would be a great spot for a small course to introduce the sport to the community. I have been a proponent of the sport being adopted on the coast for years and am glad to see it is still being considered.

There are a number of us parents on the coast that go to the Golden Gate Park disc golf course (and others around the Bay Area) but it becomes time prohibiting with our weekend traffic.

I have found that the disc golf community takes ownership of their local courses and having a course so close to my home, I would accept a large part of volunteering to make the course successful and and maintained.

Yesterday our HOA had a Zoom meeting to discuss the proposal with the neighborhood. A number of residents had concerns about parking, traffic, fire safety, proximity to there property, and shared access for hiking and dog walking. Although I feel that many concerns are mostly a fear of the unknown and a bit of NIMBY, their concerns should be respected and I would hope that maybe some outreach to owners of the adjacent homes could be offered to clear up concerns. Many of the concerned have houses that have "incorporated" some of the property into the school property.

Again, thank you for making our community such a great place to live.

To whom it may concern I want to write this email in support of the proposed disc golf course in the property south of Princeton by the sea. My name is __ ____, and I am a born and raised Half Moon Bay resident. I am a homeowner in the Princeton by the sea development as well. I am also a teacher in the Cabrillo Unified school district. I want to first say that the proposed disc golf course is a much needed resource for our local community. The community may not be aware, but both Cuna intermediate and the half moon bay high school have been running disc golf as sections of their PE programs. They have been doing this for at least the last 5 years. So there are hundreds of young people who have been exposed to the game and would be excited to have a course locally that they can play on. Additionally there is a fairly large group of local coastsiders who play at both Emerald hills in Redwood City and at Golden gate park in the city. There are about twenty of us. Lastly I know that there is a group of local retirees in their seventies that also play at golden gate park. I wanted to let you know this as their is a multigenerational interest in having a course locally. I want to address some of the concerns that I have seen come up around this topic. First the impact to nature. This course was designed to work around existing paths and usage, it is also utilizing land that is not currently maintained. There is a large amount of overgrowth and poison oak on the property that installers will take care of. Maintenance of the course would be done by local disc golfers. Lastly there will be no cutting of trees or pouring of cement slabs. The course would have temporary teepads. Second would be the comments about parking and increased foot traffic. This course is not going to bring a huge influx of people. Yes it will bring more people to the property, but not all at once. Lastly there are people co corned with noise. Noise from disc golf is not loud it is not chainsaw or lawnmower loud. The metal chains do make sound when hit, but they are not as loud as people are concerned with. The only other sounds you will hear ate joyous congratulatory and friendly banter. The local concern about the installation of this course does not in my opinion outweigh the need for this type of recreation. I would propose to any neigh sayers to visit a course and play or walk with someone playing to actually see what the game is like, but also to see that many of their concerns are unfounded.

Please build the frisbee golf course in El Granada. It provides all of us (from young to old) an opportunity to enjoy being outside with free entertainment. I think it would co-exist well with the walking trails and wildlife.

I'm happy to offer support as needed. I live at ___ Solano Ave, El Granada.

As a long time resident (over 20 years) living in the Princeton by the Sea development, I just wanted to say that every neighbor I have spoken with loves the idea of a frisbee park!!!

What a great idea to build a park that everyone can use, it preserves the environment, and provides a wonderful place for families and children...

Well done, it's a great proposal and an excellent use of our tax dollars. Well done!!!

My name is ___ ___, and I've lived in El Granada for 19 years. I was recently made aware of the following commentary by the PSIA not supporting the proposed disc golf course. I hope that you will consider the following arguments to their comments.

First and foremost, the legitimacy of the PSIA comments must be called into question considering that some of their arguments are concerns whether or not there is a disc golf course in the proposed location. Namely, items 1, 11, 13, and 15. Also, it is hard to believe they are truly concerned with the use of the land when they apparently have allowed their member to illegally build backyard extensions onto the district's land.

Their arguments are flimsy at best. And, it feels to me that they are counting on the sheer number of arguments rather than their legitimacy to sway your opinion. I sincerely hope that you will see their arguments for what they are. An exercise in relative ignorance as to the true benefits of recreational activities and specifically a tried and true activity like disc golf.

Please see a response to each item below.

1) *Fire is already a great concern in the area being considered. The cost of fire mitigation is not addressed in this proposal. The proposal assumes that the school district would manage the highly flammable eucalyptus trees. The school district's record on this is very poor. The school district has essentially done nothing to mitigate the fire danger, beyond work that Cal Fire has been able to do over the years at no cost to the district. Unless this is addressed, having more people in that space, would increase the fire risk in an already high-risk area.*

Fire is a concern that will not increase because of a disc golf course. If anything, it will decrease because of the removal of many of bushes and plants on the course. Disc Golfers do not increase the fire risk anymore than the current users of the space do.

2) *No environmental impact study is included. The area in question is home to a lot of wildlife that could be impacted. This cost is not included in the estimate for the project.*

Is an EIS mandatory here? Is there one in place for the current usage of the land?

3) *What insurance would the district have on the course, no cost is included in the estimate for the project. Liability for injuries for users of the course as well as adequate coverage for fire and other damage to homeowner property would need to be secured.*

Again, how is this any different from the current usage of the land?

4) *What fencing would be put in for the project to exclude people from the yards of homes that border the proposed park that is also high enough to prevent discs from sailing into backyards.*

There are many disc golf parks that border private residences all over the country that do not require special fencing. And, this begs the question as to how and why the current homeowners have extended their own backyards into the school district's land. Were those new fences approved?

5) *The parking is inadequate for the use contemplated of the course. The parking at the top of Coral Reef is used for access to the GGNRA, so it is not available for the park.*

This is arguable, and I would need to see their study to prove that parking is not adequate.

6) *The annual maintenance cost seems wildly optimistic. While volunteers could help lower the costs \$5,000 seems way too low, particularly given the need to do appropriate mitigation of the fire risks.*

Again, where is their information to make this claim?

7) *What is the set back from the houses on all sides of the course? The diagrams are very unclear.*

This is a legitimate question that the proposal should be able to answer.

8) *What is the security plan for the park, how will undesirable uses be prevented? Will this depend on the Sheriff's department? Have they been consulted?*

Again, this is an issue that could exist with the current usage of the space. Why does it become an issue now? If it was a problem, it would have already been brought up.

9) *What are the potential traffic impacts of the park? We already have severe issues regarding traffic, particularly on weekends, will this just attract additional people to the coast and our neighborhood?*

"Severe" issues regarding traffic? I've never seen more than one or two cars parked there on any day much less a weekend. And, I've never seen any traffic issues much less severe ones. I don't have a study to prove that, but do they? And, non-coastsiders will not drive to the course specifically to play it. There are much bigger and better courses not on the coast.

10) *What is the expected usage by people within the district vs the rest of the Coastside or the rest of the Bay Area?*

Good question. My guess is that there won't be excessive numbers of people playing this course, but it will be available for local families and players to enjoy in their downtime. Something our community desperately needs more of.

11) *Who sets the hours for the park and enforces those hours?*

One more time. Why is this being brought into question now? Who currently sets the hours for park usage and enforces it?

12) *Has the school district even been approached? What alternatives for this land are being considered?*

Of course the district has been approached and alternatives considered.

13) *Who sets the rules and regulations for the park (hours, noise, no smoking, no littering, no alcohol, etc. and how is that enforced? With the land being leased from the school district, who has legal jurisdiction to enforce these rules?*

This is the same argument as #11.

14) *The proposal does not include a bathroom and has limited garbage facilities, how will these needs be addressed? How will garbage be collected and removed?*

A legitimate question that should be addressed after seeing the amount of usage after a period of time.

15) *By opening up the space to better access by the public are we creating an attractive nuisance? What can be done to address this risk?*

A healthy recreational activity can be seen as just that or as an attractive nuisance depending on one's point of view. I know that precedence exists in so many communities locally, nationwide and even worldwide to not let this question be the reason the course is not built. There is risk in any recreational activity. Disc Golf has been proven to not be as risky as these folks seem to think it is.

I think the proposed disc golf is a great idea!!!! Disc golfers are respectful and the sport has a low impact on the environment.

We live in El Granada and fully support disk golf! Great idea.

Hello dear friends at GCSD, I may be a wee bit late writing, but I wanted cheer-on the Frisbee golf proposal. We've played at other locations many time, but don't as much because they're far away. Exercise is important at any age, but for me at age 60, it's super important. Alas, there's no swimming

pool or soccer pitch nearby, so it's mainly walking for me. I would LOVE to have a frisbee golf course here in EG. Woo! Thank you for all of work you do for our Mayberry.

I just reviewed the proposal for the new disc golf course and think it would be a wonderful, low impact addition to the coast. I live in Miramar with my wife and two daughters and we would love to use it.

On behalf of myself and my family (wife ___and adult son ___), we all are very much in support of the the initiative titled "Proposed Disc Golf Course at CUSD Sonora-Sevilla-Coral Reef Property"
Please help make this happen for our community!

I am writing to show my support for the proposed disc golf course. Disc golf is a great outdoor and family-friendly sport, as it is easy to learn and the basic discs are not expensive. Disc golf can be played by all ages. As a 62-year old, I just started the sport last year and quickly grew to love to play a low-impact, moderate energy intensive sport that also has a great social element.

I saw the news that we might be getting a disc golf course in Granada! So exciting! I'm in full support and would use this all time time! Good to go!

My name is ___ ___ and I'm emailing on behalf of the new disc golf course.
I'm 19 years old and have grown up playing disc golf with my family and friends and absolutely love the sport. Because there were never any courses in the Half Moon Bay area we always had drive a ways to go play. Having a course close by would be such an incredible addition to El Granada that not only my own family would benefit from but many others as well. The sport is extremely kid friendly and welcomes people of all different abilities. It's a great way to simply get outside and be active but also connect with new people in our community.
I know that if a course was built it would be well used and enjoyed by many!

To whom it may concern,

I am writing to support the proposal of a disc golf course in the area between Princeton by the Sea and Sonora Ave. It has come to my attention that the board for the Princeton By the Sea has written an extremely negative message about the proposal. I would like to counter some of the concerns that they have raised. First they raise the issue of fire danger and remediation. What if any remediation is happening now? At every disc golf course that I have ever been to it is the disc golf community that handles all of the maintenance. They are the ones who mow and maintain the property so remediation would be handled on a regular schedule by the disc golfers.

Secondly it came to my attention that they said a disc golf course may not be a good idea. My question to that is what would be a better idea? Disc golf is low impact exercise that is beneficial to all age groups from children to retired folk. It is a multigenerational activity that fosters a sense of community across generations. I wonder why this neighborhood would be against this sort of land usage?

Installing a disc golf on this property will be minimally impactful to nature. It will promote community relations across generations. The young people on the coastside are already playing disc golf in PE classes in both Cunha and the High School. Providing a space for these young people is important and necessary.

Thank you for putting together this proposal document. My house is adjacent to the site - ____ Sevilla Avenue.

My household would generally support a disc golf course on this site. Just a couple concerns off the top of my head:

hours sunrise to sunset; no lights

no smoking

no alcohol

trash/recycling collection provided

Assess for nesting prior to any construction: California Quail and Great Horned Owl

I lived in San Francisco for many years and watched as the disc golf course was constructed and improved in Golden Gate Park. I used to bike through there every day. It is a nice activity for all ages and the course itself has little to no impact on the land. It seems like El Granada could benefit from this type of facility. Please keep me in the loop!

I would also like to express my support for the new Disc Golf Course that is proposed in the Sonora-Sevilla-Coral Reef area of El Granada as a resident on Bridgeport Drive. I am curious what types of responses have been received by the committee thus far regarding the proposed Disc Golf Course, whether that be for or against it. Please let me know. Thank you!

Yah, Let's Build It Comments – Live on the Coastside Outside of GCSD

I am a resident of Moss Beach, not El Granada, but I live about 2 miles from the proposed location for the disc golf course and would likely visit and use this space occasionally if the park was built.

Although I haven't played this sport before, I have hiked and walked through many parks with the baskets (including the one in Santa Cruz for example) and recognize they have virtually no negative impact on the surrounding nature, but actually adding the trash and light clean-up could benefit this space that's often used as a dump or left with dog waste at many places.

It seems this lot would be the ideal place for such a course. I am sure the kids and teenagers in the surrounding suburban neighborhoods would love this addition to their community if only the locals would allow it to be built. Having read a lot of the comments on Next Door, I am a bit disappointed that several community members seem to think it would somehow destroy the wildlife in the park. They are scared the proposal would somehow introduce much noise and distraction, or even cut down trees or plants (which I saw in the proposal is specifically mentioned they will not do). I think the opposite is true - disc golf is likely less of an impact on nature than any dog walkers, the littering etc., and perhaps would even result in a tidier and cleaner space.

I think in order to achieve the goal of building such a course here, further education and information needs to be done about what it consists of and what changes the park will have from adding it. Perhaps more canvassing door to door is required, as people seem to think this is the same as a regular grass golf course being installed and are pushing back on the idea.

As a Coastside mother (2 children at Hatch) and a local high school teacher (English at HMBHS), I am writing to express my support of the proposed disc golf course in El Granada! This will be a fabulous, local recreational resource for our youth and their families with minimal impact and low cost to build/maintain. I implore you to please approve this project for our Coastside community! We NEED more places like this to gather, play, and enjoy as neighbors and friends. Too often, I feel that the focus is all on tourism.... While it is valuable for our local economy, there can always be room for more family fun activities for locals!

This email is in support of a new disc golf course in El Granada as proposed by GCSD on vacant land. As a Half Moon Bay local resident, I am looking forward to playing golf with friends in our community and see this is a perfect, low-impact activity to add.

My name is ____ and I'm emailing on behalf of the new disc golf course. I'm 19 years old and have grown up playing disc golf with my family and friends and absolutely love the sport. Because there were never any courses in the Half Moon Bay area we always had drive a ways to go play. Having a course close by would be such an incredible addition to El Granada that not only my own family would benefit from but many others as well. The sport is extremely kid friendly and welcomes people of all different abilities. It's a great way to simply get outside and be active but also connect with new people in our community. I know that if a course was built it would be well used and enjoyed by many!

I live here on the coast and I just wanted to say I am in support of the Disc golf course.

Yah, Let's Build It Comments – Live Outside the Coastside

Hello, I am writing in support of the proposed disc course in El Granada. I have been playing disc golf for years recreationally and have had many fun outings playing with my kids while they were growing up. Although I'm no longer a coast-side resident, I live on the peninsula and have many friends on the coast that I often visit. The proposed disc golf course will be an asset to the wider community by providing a wonderful outdoor activity for people of all ages. The disc courses I play at in the bay area are largely maintained by volunteers and appear to be well maintained and clean. Other players are courteous and helpful when trying to locate the next basket or tee.

There is clearly a need and demand for more disc courses, which the proposed El Granada course will help fulfill, in particular, the benefit of the course to the coast-side high school youth who participate in this activity. I wholeheartedly support this proposal and urge you to approve the proposal. I will volunteer with building the course if it is approved, and help with maintenance as I can.

I am a former resident of San Mateo County, current resident of Alameda County who still enjoys trips to the coast side of San Mateo County for activities with my children. Currently we enjoy visiting the beach, farms, and other attractions of El Granada, Half Moon Bay, and other coastal San Mateo County areas, and visit approximately 4 times per year. When we visit, we not only stop at the beach, but patronize local shops, restaurants, book stores, farms, and other attractions. A disc golf course in the area would certainly increase the frequency of our visits and not only benefit our enjoyment of the natural area but also bring increased activity to local businesses.

Good afternoon,

My name is ____ and I'm writing to you to support building a disc golf course in El Granada. Me and my family come to visit friends there. This is a hobby that we all enjoy. Please consider the option of making this dream a reality. We love coming to your town and this would be a great reason to visit more often.

I am a 30 year resident of Pacifica and have been playing disc golf for the past 40 years. I am writing to you in support of the proposed location in El Granada across from Princeton Landing. I am 57 years old and belong to several local disc golf clubs. Currently, if I or my son want to play, the closest course would be either San Francisco in Golden Gate Park or Emerald Hills in Redwood City. We would love to have a course available to us on the coast. I personally love the outdoors, I love the sport, and consider myself a steward on any course I play. I would also volunteer my services if this proposed course came to fruition. We disc golfers on the coast have been trying for many years to get something more local and this is a great opportunity we can't pass up. You have my full support, as well as my fellow disc golfers that live on the coast.

My name is _____. I'm 33 (female, if that matters for demographics!) and live in San Mateo County. I am a casual disc golf player and recent adopter of the activity (discovered during pandemic in 2020).

I want to express my support for the installation of this course, remarking on these factors:

1. Disc golf is approachable to all age groups and encourages healthy outdoor habits. My parents (retirement age ~65) live in upstate NY. Last fall, I was able to see them for the first time post-COVID and invited them to a course 10min from their home to show them what disc golf is. To my surprise, they have REALLY embraced it, purchased their own 8-10 discs from the internet, and now use disc golfing as their daily fitness -- spending between 30min - 2 hours walking outdoors and playing. To them, there is a sense of fulfillment as they progress in skill. Also, compared to their prior activity (pickleball), it is safer, less prone to injury, and reduces interactions w/ others that could transmit covid. They really enjoy the sport and are grateful I shared it with them, and that they have multiple public courses accessible from where they live.

2. There is a lack of accessible, free/cheap, disc golf courses in mid-Peninsula, especially for beginners. I found it frustrating to only have professional, paid, or both professional AND paid courses in the San Mateo county area. This new course looks to be affordable to a larger audience, and welcome to beginners who don't have the distance or skill of professional and longtime players.

3. New courses should be installed only with thoughtful layout design, and ideally dedicated-use space. For example, Golden Gate Park (San Francisco) and Hellyer Park, Kelley Park (San Jose) are excellent in that there is minimal overlap between the disc golf areas, and other park areas (pedestrians trails, picnic benches, gardens). There is adequate land to buffer disc golf fairways from others using the park. On the other hand, I personally feel the disc golf course in Berkeley (Aquatic Park) is a disaster with respect to design -- it is very narrow; you are frequently pausing and waiting for joggers or dogs to pass, there is frequent risk of a misfire, the lanes criss-cross all the time. I have also visited mixed-use parks in Stockton that try to co-mingle park space (playground, picnic areas, walking paths) with disc golf and pack too much in a small area. Again, this is non-ideal and degrades the experience of both audiences. I do not know Leonard Muise, but based on the proposal linked from this page, it seems that (1) he has past credentials & experience on successful course design, and (2) this would be a good single-use purpose of currently under-utilised space.

I have been following the progress on a proposal to install a disc golf on the little used land designated in El Granada. My mother lives on the peninsula only 20 minutes from this location, and I am highly in favor of this project. I have two kids and we often visit, this would be a frequent destination since I play and so does my five year old. My one year old loves to tag along in the stroller. It's the perfect sport for parents to enjoy with kids, as for them it's a game (or a hike), it's low impact, and a lot of fun. Please let make this happen!!

I strongly support the development of disc golf at the site in El Granada. It's an amazing activity for all ages, genders, and ethnicities. There will be lots of people who pop by for a casual round, but even more importantly, there will be people who play every day. When that happens, a community is built from scratch.

I live in Redwood City and regularly visit the coast, so I'd bring my family to come play for certain, and would be more inclined to support local businesses as a result. We've built our own course here in RWC and the response has been tremendous: 7 years in and we now have a very strong community here and it's been fantastic for San Mateo County to finally have a good clean place for folks to play.

Comments classified as *No, I have concerns*:

Live in GCSD

We love the idea of preserving this space for use by the residents of El Granada. But we would like to see the property maintained in the current park like setting it is today.

There are at least 100 people who walk or ride the trails in this space daily. It is used not just by people in adjacent lots but residents all across El Granada. They use the space cooperatively, responsively and respectfully.

We would support a disc golf course only under the below conditions:

- Retain the current paths and allow unrestricted access
- Retain the thickets that provide wildlife habitat
- Retain as many of the trees as possible while mitigating fire risk

Our concern is most focused on the environmental impact and retaining access.

Other residents are bringing up valid concerns about security, parking and influx of non residents into our space. These should also be considered in making decisions about the proposal.

Thank you for the opportunity to provide feedback.

My name is _____ and I live at _____ Madrona Ave, which borders the school district parcel of land where the proposed disc golf course would be.

I love the idea of more recreation opportunities, but my feedback is that this is not the right parcel of land. Here is why I feel that way:

01 - Increased trash - Neighborhood kids already have places in the woods where they leave trash (mostly beer bottles, chip bags, vape pens, etc.) I go back into the woods once or twice a year to clean it all out. With increased foot traffic I shudder to think what that land will look like, and I use it for walking my dog once or twice a day.

02 - Increased dumping - There is a lot of junk that gets dumped on that land. If more people know about the land I suspect there will end up being more dumping

03 - Increased noise - All of the houses on Madrona Ave that back up to that parcel have dogs living in them. Dogs that love barking at everyone who walks by on the trail. The increased traffic will bring more barking.

04 - Dog walking will get harder - Right now everyone who uses that land regularly all knows each other and each others dogs, so we can walk our dogs off-leash there as an alternative to going to Quarry Park now that the off-leash pilot is off the ground there. There are SOOOO FEW off-leash dog areas on the coast and it's nice to have this as one and not always be worried about our dogs running across new people who they don't know.

If the project ends up voted through I would like you to consider:

1. Scheduled and publicized quarterly clean-up days where the school district and whomever uses the land comes to clean up the woods together.
2. Trash cans that are regularly emptied
3. Dog waste bins that are regularly emptied
4. Some picnic tables so those of us who don't golf can better enjoy the space. You'll need to secure them in place bc the kids who trash the woods also steal picnic tables. Bummer.
5. Consider NOT putting any of the disc golf goal things up against the backs of the houses on Madrona Ave, but burying everything a bit deeper down into the woods so that the dogs don't get disturbed. Dogs are the new kids and we all work from home.
6. Consider using this land development as a chance to give back to the residents of the area and offset the nuisance. My idea? It would be great if you cut down some of the larger trees and opened up our ocean views more. I would consider that an even trade to be honest. The trees are plentiful, it's almost impossible for any of us to insure our homes, and we would LOVE to see more water and sunset.

As a homeowner and resident at ___ Sonora Ave, I have some feedback regarding the proposed disc golf course:

- 1) a MUCH LARGER BUFFER ZONE is needed behind the Sonora houses with trees or bushes to reduce noise and protect privacy.
- 2) all throwing of discs need to be in a direction away from houses towards the center of the area to keep discs out of backyards.
- 3) the park needs to be closed to players after sunset.

As someone who lives in the area, that would be impacted, I am not in favor of the Disc Park being built where you want to build it. Our neighborhood does not need increased traffic or scores of people coming through the neighborhood. I know I would not want the activity near my backyard, even if there is a buffer zone.

I live about a block from the proposed site. It's tricky enough driving or walking on that part of Sonora Ave without worrying about additional drivers that don't know the area.

Please do not build this park in the proposed area.

I am writing to provide feedback on the proposed 12-hole disc golf course at the Sonora Sevilla Coral Reef property. Although I support low cost and community generated support for this project, there are some substantial issues that are not discussed in the proposal.

1) Parking is estimated as 3-8 cars per weekend. This is truly an estimate with no analysis provided. Additionally, there is no discussion on the proposed parking areas. As a resident of Sonora Avenue and one who lives directly across from the proposed parking area, there is no discussion on accommodating the parking as well as the proposal mentions HMB high school being able to play this course. In order for the high school to practice and play this course there needs to be an actual analysis on parking and local traffic, accomplished through a CEQA analysis.

2) Development of the parking lot will require a Coastal Development Permit (San Mateo County LCP). This entire property is within the Coastal Zone and an ESHA with California red-legged frog occurrences (federally threatened species) documented on this property.

3) The proposed parking area is substantially saturated annually and because the definition of a wetland in the Coastal Commission is single-parameter and defined by the plant composition, this area is highly suspected to be a wetland under the Coastal Commission and subject to permitting. Additionally, the adjacent street at this location has a large amount of rainfall flow

during the winter and the water flow width often ranges 3-5 feet along Sonora Avenue at this area.

Because this proposal not only underestimates the weekend traffic, does not define the area of parking or development size of this area, as well as (very importantly) provide no analysis on the HMB High School team practicing and holding events at the course, I object to this proposal.

Feel free to reach out to me if you have questions.

I'm not keen on the location for the Disc Golf course. I feel like we already have Quarry Park and the new park at Burnham Strip is going to be big. There is too many things going on at once here in El Granada.

As for traffic, everyone detours Sonora if the highway is closed or during slow weekend traffic.

This will just add to the traffic part of that and its very inconvenient and frustrating for us all.

I don't see what's wrong with just keeping the natural space, it is very important to keep it the way it is. Many of the residents move to El Granada because they enjoy the unspoiled natural beauty. I'm only two blocks away, and if I lived closer to this park, I'd be really unhappy.

I'd rather have less people use the area than more.

GCSD is really going gung-ho with too much stuff all at once.

The community center will soon serve the residents more than the few that will enjoy disc golf.

We received the flyer on our doorstep regarding the proposed disk golf course. We live at ___ Coral Reef Avenue so this course will be directly behind our home and backyard. We have reviewed the entire document online and have some questions and concerns.

Our number one concern is FIRE. Inviting people behind our homes opens us up to a potential of people smoking and littering. What will be done to mitigate the fire risk? We have lived in our home for 40 years. We have only seen the school district trim trees or clear brush 1 time. We don't even know if it was the school district who did it. There is a lot of uncleared, overgrown, flammable, dry vegetation back there and what is going to be done to mitigate the risk of a cigarette or careless player? Will the trees be trimmed? Will the vegetation be cleared?

There is a red line indicating a boundry on the map. Nowhere does it say exactly how wide that boundry is and how close to our backyards this course will be. We are concerned about possible groups of people being directly behind our backyard and limiting our privacy and exposure. We are concerned about noise. Nowhere in the proposal does it indicate hours of play and who will be in charge if there is a problem. Will there be a restroom? We are concerned that it will be all "volunteers" running this. The proposal does not indicate what will happen to the environment for the animals back there. We have owls, hawks, foxes, skunks, deer, racoons and coyotes. Has a study been done on the impact on the wildlife being disrupted?

What about insurance? How will this be insured? What happens if our property is damaged? There is no mention of insurance in the proposal.

Parking seems inadequate. It mentions parking on Sonora and also at the top of Coral Reef. The parking at the top of Coral Reef has already been designated for the open space at the top of our hill. Has anyone checked on that?

The budget seems wholly inadequate. Period.

We feel that this proposal is not complete and leaves a lot of questions. Has the owner of the property agreed to this propoal? It is not indicated in the literature. Would this park fall under county or unincorporated for law enforcement coverage?

Lastly, leaving a paper flyer on our front porch is not enough. Many of our neighbors never even saw it. The neighborhood should have received an email as well so that everyone was notified in several different ways. When will there be a meeting for our neighborhood to meet who is proposing this and hear the answers to our questions?

As a resident on Coral Reef for over 30 years I am very familiar with the open space under consideration and would here like to add my voice to the list of neighbors opposing this proposal. Not all ideas that rise to the surface are necessarily ones that deserve implementation. Having raised three kids on the Coastside I am well aware of the value of having outdoor engagement opportunities. That said, I am also aware the community has a variety of choices for exercise and social interaction. More, in fact, than when my children were in the area. Having spent my career working in informal environmental education I am also very much aware of the value of the welfare provided by outdoor activities. The proposed disc golf in this particular space, all these other considerations aside, remains ill conceived. Here are a some the specific points I have been considering that have led me to this conclusion.

- * Increasing fire risk in an area well acknowledged by CalFire as one of significant concern.
- * Disturbance to wildlife. Yes, little of the extant vegetation can be considered native. That said, it is wonder the diversity of wildlife that have demonstrated the adaptive ability to call this area a secure home.
- * Similarly, disturbance to the seasonal wetland area in the south-west quadrant.
- * Increase in the ambient noise levels.
- * Increase pressure on neighborhood parking.
- * Potential impact on homeowners insurance when fire risk is evaluated. Some homeowners have already dealt with cancelled policies.
- * Potential negative impact on property values.
- * Inadequate trash management beyond having a few cans.
- * No proposed restroom options.
- * Increased presence by non-local individuals and the potential use of the property for activities other than the one intended, including after hours.

We are the Princeton-by-the-Sea Subdivisions Improvement Association representing the 227 homeowner members of our neighborhood. Our neighborhood borders the parcel owned by the School District, the current proposed site for the disc golf course, on both Sonora Avenue and Coral Reef Avenue.

While the possibility of having a Disc Golf course somewhere on the coast could be desirable, the current proposal is not well thought out and ignores key issues that must be addressed before a project like this could even be considered.

The issues and omissions include:

- 1) Fire is already a great concern in the area being considered. The cost of fire mitigation is not addressed in this proposal. The proposal assumes that the school district would manage the highly flammable eucalyptus trees. The school district's record on this is very poor. The school district has essentially done nothing to mitigate the fire danger, beyond work thar Cal Fire has been able to do over the years at no cost to the district. Unless this is addressed, having more people in that space, would increase the fire risk in an already high-risk area.
- 2) No environmental impact study is included. The area in question is home to a lot of wildlife that could be impacted. This cost is not included in the estimate for the project.

- 3) What insurance would the district have on the course, no cost is included in the estimate for the project. Liability for injuries for users of the course as well as adequate coverage for fire and other damage to homeowner property would need to be secured.
- 4) What fencing would be put in for the project to exclude people from the yards of homes that border the proposed park that is also high enough to prevent discs from sailing into backyards.
- 5) The parking is inadequate for the use contemplated of the course. The parking at the top of Coral Reef is used for access to the GGNRA, so it is not available for the park.
- 6) The annual maintenance cost seems wildly optimistic. While volunteers could help lower the costs \$5,000 seems way too low, particularly given the need to do appropriate mitigation of the fire risks.
- 7) What is the set back from the houses on all sides of the course? The diagrams are very unclear.
- 8) What is the security plan for the park, how will undesirable uses be prevented? Will this depend on the Sheriff's department? Have they been consulted?
- 9) What are the potential traffic impacts of the park? We already have severe issues regarding traffic, particularly on weekends, will this just attract additional people to the coast and our neighborhood?
- 10) What is the expected usage by people within the district vs the rest of the Coastside or the rest of the Bay Area?
- 11) Who sets the hours for the park and enforces those hours?
- 12) Has the school district even been approached? What alternatives for this land are being considered?
- 13) Who sets the rules and regulations for the park (hours, noise, no smoking, no littering, no alcohol, etc. and how is that enforced? With the land being leased from the school district, who has legal jurisdiction to enforce these rules?
- 14) The proposal does not include a bathroom and has limited garbage facilities, how will these needs be addressed? How will garbage be collected and removed?
- 15) By opening up the space to better access by the public are we creating an attractive nuisance? What can be done to address this risk?

The PBTS Board objects to the proposal in its current state. Until a revised proposal is developed that fully addresses these issues, the Princeton by the Sea Homeowners Association cannot support this proposal.

Hello. I am registering my disagreement with creating a disc golf court in El Granada. Please stop turning this town into a man made amusement park! We've already lost open space in Quarry Park to a pump track that is not very used... We only see 2 to 3 bicyclist at a time if at all in there. The idea of allowing frisbees flung so close to homes and the street seems irresponsible and dangerous to passersby on foot

or in vehicles. It also takes away from the character of the community we moved here for. Many of the 3k+ residents here live here for the open spaces and nature views. Even though the Eucs are non-native they are beautiful, fragrant, and home to many birds and other wildlife. We would prefer new native trees to disc golf to replace them! We even rescued a baby hummingbird that had fallen from its nest in the exact spot you are considering this. We are residents here since 1999 and our kids grew up enjoying the outdoor spaces without all that man made junk. We enjoy hikes, biking and walks so close to our homes and now that is being threatened by multiple projects aside from this....the pump track already, the Burnam Strip that is heading toward becoming a public "park", a proposed pickle ball court. I voted a few years ago for the parks to spend money on maintaining our parks but I do not approve of these projects that use man made non recycleable gear and take over the open spaces with noise and people. Please leave El Granada as is! Our town is getting crowded and there is less and less open spaces nearby. I'm sure a disc golf course would be more successful in spaces like by Smith Fields in Half Moon Bay!

Hello. I live on Madrona Avenue and I have some serious concerns about the disc golf development. Traffic/Parking: Where is the proposed parking area for the development? There are many rental units on Madrona & Upper Sevilla and those residents already use the easement area where Madrona and Sevilla connect as parking. The area already looks a bit like a parking lot and we can't handle additional people using that area as parking. It makes more sense to have parking near the entry by where Coral Reef meets Sonora since there are minimal residence and people already use that area for appliance dumping and car storage on a semi-regular basis. A little parking lot there might actually clean that area up a bit.

Trash: The proposed area for the course is full of trash (everything from cement blocks and construction debris to cigarette butts and food scraps). There are also some people using it as boat and vehicle storage. And there are two areas in the woods where the local kids go that are full of broken glass, vape pens, chip bags, old chairs, and other assorted objects. No one takes care of the land as it is and this will only get worse with more foot traffic.

If the decision is between disc golf and building an office or housing then obviously I prefer disc golf. That said, I implore you to find a way to give back to the community around the golf course. Some suggestions:

Picnic tables (You'll need to bolt them down. Trust me.)

Trash cans and dog waste bins that are regularly emptied

Clear out some of the fire hazards

Give us a hotline we can call when we see illegal activities like dumping of construction debris

Cut down some of the larger trees to open up the ocean and sunset views for the folks on Madrona/Upper Sevilla

Buffer zone between the course and the houses (I don't want to deal with players hopping fences to retrieve lost discs). Thank you

I am against the project because this property is in a semi wild habitat that happens to be owned by the Cabrillo Unified School District and that some Granada Community Services District members want to use for other purposes. From what I understand as a property owner on the periphery of this semi wild habitat I have my property rights just as my immediate neighbors have theirs and we both have to respect each other's rights when a situation comes up that will unduly affect each other's property and our living standards that have been established over many years.

Given that the concerned property as it is now it has brought joy and the recognition of how much a semi wild property can be valued, not just by the periphery home owners but also by all the visitors that have walked their dogs, walked the trails, children riding bikes, sat in the seasons growth of grass and flowers watched owls with young learning to fly, hawks with a nest and young, and many other birds

and their songs and animals - deer that come out of thickets of trees, coyotes that howl, skunks that follow you...

Could the school district imagine that this semi wild land use could also be a learning landscape and experience for the students who will have the children of the next generation, who may be brought up to also value the semi wild land amongst the homes and the continuing pressures of development (which will happen but how?).

Other considerations beyond what I have already stated are these:

Vehicle and street traffic on Sonora and Madrid and Sevilla Avenues would increase - these streets are now used by walkers, dog walkers, baby carriages, young bicyclists - street parking would also require a permit system...beyond the parking lot...

Our home and property (___ Sonora) has a proposed basket or tee that abuts our backyard - the course needs to be moved further out beyond the bushes and pampas grass that are now there (see photo attached), as a needed buffer zone (in the proposal buffer zones will be part of the course) and for these reasons:

1) security - we would require a security fence and cameras to be put up and a security person on the grounds - we don't want to call the sheriff and create animosity between people on the course and us...

2) noise - our neighbors have 2 dogs that would be part of security and they bark loudly at everyone over our adjacent fences - we could not sit on our deck or in our garden with the people going by (from the first tee) with their intrusion of noise and the dogs responses -

we definitely need a buffer of bushes and pampas grass beyond our backyard fences -

(no one who wants the course would accept the immediate noise and security level that our home and the several other homes on the corner of Sonora and Madrid would endure

the other adjacent homes on Coral Reef and Sevilla all have buffer zones behind their backyards -ie eucalyptus and pine trees and more space)...

Is there not a more appropriate place, Quarry Park for example, where established housing would not be as affected and street traffic is already established and it is closer to the high school. Could our community members not think this would be a better place for the course, with less driving and polluting and noise levels already established for a park?

Please consider my points...and hopefully the school district will also..

As homeowners on Coral Reef Avenue, part of the Princeton-by-the-Sea Subdivisions Improvement Association, we would like to voice our concerns with your current proposal to create a disc golf course on the School District Property adjacent to our neighborhood and home.

The proposal falls short on a number of areas and we would like these addressed more thoroughly before the project is permitted to move forward.

1. Fire danger - The School District has failed to maintain the property and mitigate the fire danger the eucalyptus grove presents in its current state. Despite numerous attempts and discussions with both the School District and Coastside Fire this area continues to be an imminent threat to the surrounding neighborhoods. Adding a disc golf course brings more users to this area. We request that you present your plan for addressing the existing problem and how you plan to continually maintain the area to mitigate the danger.

2. Parking - your proposal identifies 2 areas to be used for parking. The first area at the top of Coral Reef is the current parking designated for the GGNRA trailhead and is quite busy already. This area is not a solution for parking for the new proposed course. The second proposed location seems to create a lot on Sonora Ave. Please provide details as to what the vision is for this parking area - paved, how many vehicles can it accommodate, is there a time limit and if so, how will it be enforced. We do not want a situation where visitors to the course are now parking in our neighborhood, taking up street parking that is already in high demand on weekends when the lot at the top of Coral Reef is full, making it difficult for residents to park.

3. Restroom Facilities - what is the proposal to provide restroom facilities for use by course patrons? Who will be responsible to pick up any litter left behind?
4. Trash/Recycling - what is the proposal to provide services for trash/recycling for use by course patrons?
5. Environmental impact - has a study been done to identify potential impacts the proposed course would create on the numerous wildlife that resides or migrates through the property?
6. Hours of Use/Permitted Activities/Enforcement- what is the proposal for permitted hours of use? What are the defined activities for the course - it is one thing to host individual games by groups and a far different thing to host group tournaments and events (the latter would pose much greater concerns)? Who would be responsible for enforcement - which agency would have jurisdiction to address issues that come up with hours of use, potential noise violations and non-permitted activities.
7. Insurance - which group would be responsible for insurance for injury and/or general liability? What are the proposed policy limits? Who would be named additional insured (will the homeowners be protected from damage arising from course use)?
8. Course containment - what is the proposal to keep errant discs from landing in the property of bordering homeowners? Will fencing or netting be installed? What is the planned "setback" between course and neighboring property lines?
9. Costs - a brief figure was mentioned for yearly maintenance of the course. What is the initial budget proposal and the annual operating budget proposal?

We look forward to hearing more about the project in detail. What is the time frame for addressing the concerns voiced by the community?

With the limited space available on the coast, this seems like one slotted land use, especially for a trendy recreation. I don't agree and think a multi-use proposal is needed. Possible something that will support the majority of coastsiders, and not just a small handful of high school students.

Long time resident of El Granada on Marid Ave. I understand the desire to make more use of the space that this small community greatly appreciates, yet I would like it to remain wild and peaceful and oppose the Disc Golf course idea. The potential disruption of the natural habitat and increased numbers of people to that space, noise and litter it will bring to those who have invested properties adjacent to the space, is not what the coastside needs. The communities around El Granada and Half Moon Bay need something that offers peaceful appreciation of nature for all, vs. outdoor commercialized sports activities to a few.

Please reconsider other offers to make use of that space. We've seen what happens such as Mavericks events and the impact they can have on our small communities.

PLEASE NO! Don't destroy this wonderful patch of nature right in the middle of our neighborhood. Frisbee golf is a fad that will go the way of the pet rock. Even if it catches on, it will just add congestion and more development. Don't turn El Granada into Santa Cruz.

We are very concerned about the increase of traffic on our already busy streets. Our residential streets do not currently support the weekend traffic.

We are also concerned about our privacy - our bedroom and living areas face this field.

This is not an activity for just our "coastal community." We will have people from all over come into our residential areas and crime, property damage, litter etc, are of huge concern and worrisome.

Thank you for your consideration in this matter.

I am opposed to the proposed disc golf course. El Granada residents value our open space as it is a valuable place for dog walking, kids playing in open space, and keeps our community feeling rural. Disc golf does not appeal to a wide enough portion of the community to make it worthwhile. If the space were to include golf activities for all ages, such as a driving range or putting and chipping area, it may be more attractive.

Dear Members of the Granada Community Services District, I would like to take this opportunity to express my thoughts on the proposed Disc Golf Course fronting on Sonora Avenue in El Granada.

On the surface this sounds like an interesting idea for the use of "underutilized land", providing a place for people to throw Frisbees at targets in a modern golf game. Looking at the plans, followed by walking the property I can see some issues. The overlay of the twelve holes indicates that there would be major tree and brush removal.

Parking would be on Sonora Avenue, in the middle of residential areas. Since the tunnel was opened, the Coastside has been discovered. Everyone wants to visit, and for a good reason – it is a special place. On the weekends traffic is backed up solid from El Granada to HMB in both directions. If you look online at how many disc golf parks exist on the Peninsula, you will see that there are four. This will certainly attract people from over the hill. It will be discovered! With the Internet, nothing is private. The usage might be well underestimated in the proposal.

As a homeowner in El Granada for 35 years, the thought of cars idling with music blaring and people hanging out in front of my house on Sonora Avenue, does not "float my boat". This is not consistent with the tranquility and peace of the neighborhood.

More questions:

1. Who will monitor after hours usage?
2. Will garbage collection every other week be sufficient?
3. Will "volunteers" really appear out of the woodwork to build, clean and maintain the park? Every volunteer organization I work with is short of volunteers, because young people have other interests. This estimate might not bear fruit. The financial impact concerns the continued cost of maintenance if no volunteers step up to the plate.
4. Oh, and by the way, with the public spending their time there, I didn't notice mention of restroom facilities being included. Where will patrons do their business?
5. I wonder what the family of a dozen golden hawks living in the trees above the property will think about all this?

In closing, this might be a good idea to consider on the Burnham Strip Park, where many community use options are being evaluated, but please do not build it in the residential neighborhood of Sonora Avenue.

Incidentally, I wonder how long this has been in planning behind the scenes. Since the plans were drawn up in April, I would imagine this has been in progress for a year.

I haven't met anyone living adjacent to the proposed park who is in favor of it. Please look for another place to build it!

I understand the need for outdoor activities and how important they are to everyone. But I would rather see that area improved and cleaned for additional hiking trails. The area proposed would be impacted by additional traffic and litter especially on the weekends. Well manicured trails, maintenance of that grove for fire prevention is more appropriate for the area. The grove is an oasis for our area and I would hate to see it developed which would inevitably become an area of increased litter and fumes. California has a major littering problem in our area as well as throughout the state. Our littering problems on the sides of the roads is bad enough why do you want to add to this problem another location that will be impacted by people who don't care about keeping areas clean for others.

My 2 cents.

I live at ___ Sevilla Avenue – across from the proposed Disc Golf course.

I am against this proposal for all of the reasons others have cited – traffic, disruption to dog walkers, hikers, damage to wildlife and animals and environmental issues (wetlands, etc.). I walk there every single day. As a senior it is much more navigable than the open space – and closer to home if something happens. I cannot imagine walking through an active disc golf course. It would make it hazardous to me and disruptive to the players if I “walked straight through” their course. Which I would insist on being able to do without regard for their playing. You can’t take away one person’s current recreation to give it to another!

And, I am particularly concerned that the proposal is being promoted (not necessarily by GCSD) as a way to stave off development by CUSD. Many on NextDoor are being misled by this and are only willing to consider the disc golf course IF it stops CUSD. Yet, I do NOT see anywhere in the proposal that this is true and personally believe disc golf would just “pave the way” for CUSD to build the land out!

If I am incorrect, please show me where it says otherwise.

Also, if there is a “lease” (or one is proposed) – what is the term length? A year? Five years? Or? If CUSD signed something saying they would not develop the land for ten years (due to a long lease term) I might be more open to the proposal.

I walk my dogs through that area almost every day. I am concerned about the impact on the open space that is provided there.

Yesterday I saw a deer family on the Sonora Street end of the path. What would be the impact on our local wildlife?

Parking is the other concern. There is not a lot of parking available in the area surrounding the proposed disc golf.

Since, most of the potential participants seem to be from the high school. perhaps some of the area near the housing

developments closer to the high school could be potential course sights better suited to this activity.

The neighbors that I have spoken with share my concerns.

I do share the concern about the spreading of the eucalyptus trees in that area and would prefer them to be replaced by redwoods although

I understand this is a costly endeavor. In the long run it would be beneficial to our ecosystem.

ITEM #2

GRANADA COMMUNITY SERVICES DISTRICT
Parks Advisory Committee

AGENDA NOTICE

There are no documents for this Agenda Item.

ITEM #3

GRANADA COMMUNITY SERVICES DISTRICT
PARK ADVISORY COMMITTEE

AGENDA MEMO

TO: PAC Members
SUBJECT: Item 3 – Recreation Programs
DATE: August 29, 2022

For your information, the District will be hosting a movie night in Quarry Park on Saturday, October 1, 2022 at 7:00 pm, showing Close Encounters of the Third Kind.

The link to register is provided below.

<https://www.etix.com/ticket/p/2599375/close-encounters-of-the-third-kind-locationquarry-park--beach-break-entertainment>

The poster features a green header with a blue van icon and the text "BEACH BEACHBREAKENTERTAINMENT.COM". The main text on the left reads "SATURDAY OCTOBER 1st 7:15 PM" followed by "CLOSE ENCOUNTERS OF THE THIRD KIND Presented by GCS D Hosted by SMCP". At the bottom left are logos for Granada Community Services District, San Mateo County Parks, and Quarry Park. The right side of the poster shows a movie poster for "CLOSE ENCOUNTERS OF THE THIRD KIND" with a starry sky and a road leading to a bright light. The bottom of the poster has a blue banner with the text "FREE! Register for space BeachBreakEntertainment.com QUARRY PARK, EL GRANADA".

ITEM #4

AUGUST						
SUN	MON	TUES	WED	THU	FRI	SAT
	1	2	3	4	5	6
7	8	9	10	11	12	13
14	15	16	17	18	19	20
21	22	23	24	25	26	27
28	29 PAC Mtg	30	31			

SEPTEMBER						
SUN	MON	TUES	WED	THU	FRI	SAT
				1	2	3
4	5 Labor Day	6	7	8	9	10
11	12	13	14	15 GCSD Mtg	16	17
18	19	20	21	22	23	24
25	26	27	28	29	30	

OCTOBER						
SUN	MON	TUES	WED	THU	FRI	SAT
						1
2	3	4	5	6	7	8
9	10 Columbus Day	11	12	13	14	15
16	17	18	19	20 GCSD Mtg	21	22
23	24	25	26	27	28	29
30	31					

NOVEMBER						
SUN	MON	TUES	WED	THU	FRI	SAT
		1	2	3	4	5
6	7	8	9	10	11 Veteran's Day	12
13	14	15	16	17 GCSD Mtg	18	19
20	21	22	23	24 Thanksgiving	25	26
27	28	29	30			

DECEMBER						
SUN	MON	TUES	WED	THU	FRI	SAT
				1	2	3
4	5	6	7	8	9	10
11	12	13	14	15 GCSD Mtg	16	17
18	19	20	21	22	23	24
25 Christmas	26	27	28	29	30	31